

INCLUDES VENUE ACCESS SECTION

ACCESS

LONDON

THEATRE

AUTUMN

2010



**AUDIO-DESCRIBED, CAPTIONED AND SIGN LANGUAGE
INTERPRETED PERFORMANCES ACROSS THE CAPITAL
FOR SEPTEMBER, OCTOBER, NOVEMBER AND DECEMBER 2010**

**VISIT
LONDON**
VISITLONDON.COM



MAYOR OF LONDON

ACCESS LONDON THEATRE

Welcome to the autumn 2010 edition of **Access London Theatre**. This is the 14th edition of the brochure and lists **audio-described**, **captioned** and **signed performances** taking place in London theatres between September and December 2010.

Inside the brochure you'll find over 120 listings for shows taking place in venues across London's Theatreland, including big West End playhouses, fringe venues and London's regional theatres. Whether you're looking to see drama, comedy, new writing, Shakespeare or one of the West End's glittering musicals, this brochure contains a vast selection of the best that 2010's autumn season has to offer.

Don't forget that many theatres offer discounts for tickets booked for assisted performances, so be sure to mention that you are booking specifically for the assisted performance when you contact the theatre in order to take full advantage of any concessions they may offer.

FREE Access Bulletin

As shows are being announced all the time and therefore cannot always be included in the Access Brochure, every month Official London Theatre sends out an Access Bulletin packed full of news and information about just-announced assisted performances.

To register to receive the bulletin, visit www.officiallondontheatre.co.uk/register

Access London photo maps

Don't forget to visit Official London Theatre for the Society of London Theatre's specially commissioned photo maps. Each photo map provides clear, detailed directions from accessible train stations or London landmarks, direct to the theatre door, helping to make your journey as straight forward as possible. The maps include an estimated journey time and, alongside several photos of the route, show you exactly how much of the journey you have completed at each point. There are currently 45 maps available which can be downloaded at www.officiallondontheatre.co.uk/access/venue



Theatresign Training Course

Theatresign continues to run training courses in Theatre Interpreting for qualified Sign Language Interpreters. Upcoming courses include a two-day training course at the Dominion Theatre built around *We Will Rock You* on 22 and 23 October, which involves the signed performance and tasks related to the show, and a pantomime workshop on 19 November which will be taught by Donna Ruane and Chloe Harbour also at the Dominion Theatre. March 2011 will also see a new course built around *The Phantom Of The Opera*. For more information visit the training section on www.theatresign.com

Family Sign Interpreted Workshop

The Churchill Theatre Bromley and Theatresign have organised a Sign Language Interpreted Pantomime Workshop on 29 December from 12:00-13:00. The free workshop is open to deaf children and their siblings and friends attending the signed matinee performance later that day and is a chance for children to go on stage and learn about the history and traditions of pantomime. They will also be given the chance to act out some of the most famous scenes and routines from classic pantomimes. The signed performance of Aladdin starts at 14:30 and is interpreted by Donna Ruane. Please request a place on the workshop at the time of booking tickets by calling 0871 297 5477 or emailing bromleyaccessbookings@theambassadors.com



Talking Notes®

If you are planning on attending a show at the London Coliseum or Royal Opera House, Talking Notes® ensure you don't miss out on anything. The company offers an audio-introduction for each performance, including a plot synopsis and vivid descriptions of the set, costumes and characters. For further details, call 0870 145 7500 (English National Opera) or 020 7304 4000 (Royal Opera House) to speak to an Access Officer.

How to book

Make sure you have a look at the tips below before booking an assisted performance:

- Don't leave it too late to book as popular shows or theatres with a smaller number of seats often sell out their allocation of seats for an assisted performance very quickly.
- When you book make sure you let the theatre know you are booking specifically for the assisted performance. This will ensure you are seated in the correct part of the theatre and that they also offer you the correct rate as some theatres offer special access discounted tickets.
- For information on each theatre's venue access information, refer to our Venue Access Guide which is printed in the middle of this brochure or can be downloaded as a PDF at www.officiallondontheatre.co.uk/access/venue. Remember to let the theatre know if you have any access needs when you book.
- Don't forget, you might have to pay a booking fee on top of the ticket price.

I hope you find this brochure useful and enjoy 2010's autumn theatre season.

Charlotte Marshall

020 7557 6700

enquiries@solttma.co.uk

www.officiallondontheatre.co.uk/access

This brochure is available in print, on tape, on CD, as an MP3 or in Braille. Please call or email to request your choice of format.

All text and cast listings correct at time of going to print.

HOW DOES IT WORK?



Audio Description is the means whereby blind or partially sighted audiences can experience theatre; it is a live verbal commentary providing information on the visual elements of a production as it unfolds. It describes action that is essential to the understanding of the story, as well as other visual information such as the style and design, sets, costumes, facial expressions and visual jokes that might otherwise be missed. The description is delivered around the dialogue of a performance and patrons listen to it through a discreet headset.



Captioning is similar to subtitling and gives deaf, deafened and hard of hearing people access to dramas, comedies and musicals. At a captioned performance the words are displayed on a screen (or screens), placed near the stage or in the set and can be seen at the same time as they are spoken or sung. Speakers' names, sound effects and offstage noises are also shown. A trained captioner prepares the script in advance so as to mirror the rhythm and flow of the performance, then operates the captions as the action happens on stage.

Captioning is also helpful for theatregoers whose first language is not English, anyone who has difficulty following strong accents and students who are studying the text of a play.

STAGETEXT captioned performance of The Wizard Of Oz, The Lowry, Salford Quays. Photo: Ben Blackall



Sign Language Interpreted Performances are a regular feature of London theatre in drama, musicals and childrens' theatre, offering a wide variety of choices to deaf and hard-of-hearing theatre-goers. An interpreter will stand in a clearly visible position and interpret the spoken and heard aspects of the show.

Donna Ruane interpreting Chicago, London. Photo: Catherine Ashmore

Please say that you are booking for an audio-described performance so you qualify for any discounts that are available.



WED 1 SEP 14:30

£40

LOVE NEVER DIES

Adelphi Theatre, Strand, London WC2E 7NA

Andrew Lloyd Webber's new musical continuing the stories of the principal characters from *The Phantom Of The Opera*.

T: 0844 412 4648 **E:** customer.relations@seetickets.com

Audio-described by Irene Richards



FRI 3 SEP 19:30 & **SAT 4 SEP** 14:30 (Touch Tour 12:45)

£15

(Companion ticket same price)

EARTHQUAKES IN LONDON

National Theatre Cottesloe, Upper Ground, South Bank, London SE1 9PX

Mike Bartlett's epic play examines our fear of the future and guilty pleasure in the excesses of the present.

T: 020 7452 3000 **E:** boxoffice@nationaltheatre.org.uk

Audio-described in-house



SAT 4 SEP 14:30

£14

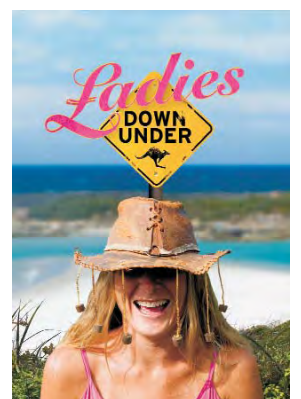
LADIES DOWN UNDER

Queen's Theatre, Hornchurch RM11 1QT

Pearl, Jan, Shelley and Linda leave their jobs in a Hull fish packing factory and embark on a laughter-filled trip of a lifetime.

T: 01708 443 333 **E:** james@queens-theatre.co.uk

Audio-described by Hannah Dunton



SAT 11 SEP 14:30

(Companion ticket free) **£10-£25**

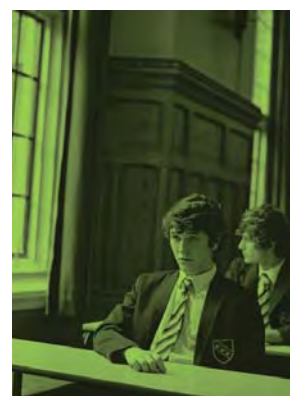
PUNK ROCK

Lyric Hammersmith, Lyric Square, Hammersmith, London W6 0QL

Intelligent. Articulate. F***ed. Simon Stephen's award-winning play returns for two weeks prior to a national tour.

T: 0871 22 117 22 **E:** tickets@lyric.co.uk

Audio-described in-house



4 Audio-described



Please say that you are booking for an audio-described performance so you qualify for any discounts that are available.

THU 16 SEP 19:30

£10

RE-ORIENTATIONS

Soho Theatre, 21 Dean Street, London W1D 3NE

An astonishing visual feast exploring love, sexuality and performance, as lives collide in contemporary Asia.

T: 020 7478 0100 **E:** Box1@sohotheatre.com

Audio-described in-house



SAT 18 SEP 14:15 (Touch Tour 12:45)

(Companion ticket same price) **£15**

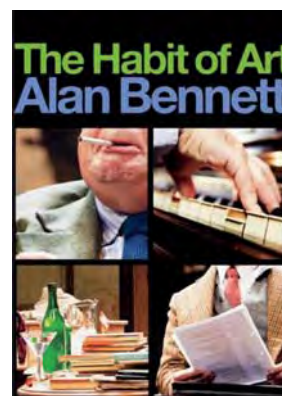
THE HABIT OF ART

National Theatre Lyttelton, Upper Ground, South Bank, London SE1 9PX

Your last chance to see Alan Bennett's latest smash-hit at the NT, prior to a UK tour.

T: 020 7452 3000 **E:** boxoffice@nationaltheatre.org.uk

Audio-described in-house



SAT 18 SEP 14:30 (Touch Tour 13:00)

£10-£85

LES MISÉRABLES

Barbican Theatre, Silk Street, London EC2Y 8DS

A brand new 25th anniversary production of Boubil and Schönberg's legendary musical.

T: 0845 120 7511 **E:** access@barbican.org.uk

Audio-described by VocalEyes



SAT 18 SEP 14:30

£16-£24

MORECAMBE

Richmond Theatre, The Green, Richmond, Surrey TW9 1QJ

The hilarious and touching, Laurence Olivier Award-winning, account of the life of the incredible Eric Morecambe. It will bring sunshine to all.

T: 0844 871 7677 **E:** richmondboxoffice@theambassadors.com

Audio-described by Denise Rocard



Please say that you are booking for an audio-described performance so you qualify for any discounts that are available.



FRI 24 SEP 19:30 & SAT 25 SEP 14:30

£30

WICKED

Apollo Victoria Theatre, 17 Wilton Road, London SW1V 1LG

Discover the incredible untold story of an unlikely but profound friendship between two girls and their extraordinary adventures in Oz.

T: 020 7828 7074 **E:** apolloboxoffice@theambassadors.com

Audio-described by VocalEyes



SAT 25 SEP 14:00

£7.50-£17.50

BEDLAM

Shakespeare's Globe, 21 New Globe Walk, Bankside, London SE1 9DT

World premiere of Nell Leyshon's new play set in London's infamous hospital for the insane.

T: 020 7902 1409 **E:** sian.p@shakespearesglobe.com

Audio-described by VocalEyes



SAT 25 SEP 14:30 (Touch Tour 12:45)

(Companion ticket free) **£25**

WAR HORSE

New London Theatre, Drury Lane, London WC2B 5PW

The National Theatre's award-winning production continues its record-breaking run at the New London Theatre.

T: 020 7452 3000 **E:** boxoffice@nationaltheatre.org.uk

Audio-described in-house



SAT 25 SEP 15:00

£11-£16

HOW TO BE AN OTHER WOMAN

Gate Theatre, Above The Prince Albert Pub, 11 Pembridge Road, Notting Hill, London W11 3HQ

A new piece about love, ambition and putting yourself in someone else's shoes.

T: 020 7229 5387 **E:** gate@gatetheatre.co.uk

Audio-described by Ruth James



SAT 25 SEP 15:00 & TUE 28 SEP 19:45

£11 / £13

THE THUNDERBOLT

Orange Tree Theatre, 1 Clarence Street, Richmond TW9 2SA

A family gather at their brother's deathbed. But there's no will – and an illegitimate daughter.

T: 020 8940 3633 **E:** box.office@orangetreetheatre.co.uk

Audio-described by Veronika Hyks



6 Audio-described



Please say that you are booking for an audio-described performance so you qualify for any discounts that are available.

SUN 26 SEP 20:00

£10- £18

BEAUTIFUL BURNOUT

York Hall, 5-15 Old Ford Road, Bethnal Green, London E2 9PJ

Beautiful Burnout is a thrilling piece of physical theatre immersing the audience in the world of boxing.

T: 0845 120 7511 **E:** access@barbican.org.uk

Audio-described by Linda Head and Rosie Wild



WED 29 SEP 15:00

£19.50

SISTER ACT

London Palladium, Argyll Street, London W1F 7TF

Last chance to see an audio-described performance of London's smash-hit musical comedy at the Palladium.

T: 0844 412 4648 **E:** customer.relations@seetickets.com

Audio-described by Irene Richards



SAT 2 OCT 19:30

£7.50

THE ALIENS

Bush Theatre, Shepherds Bush Green, London W12 8QD

The Aliens introduces two new cult heroes and puts modern day America under the microscope to ask what happened to the generation who never grew up.

T: 020 8743 5050 **E:** boxoffice@bushtheatre.co.uk

Audio-described by TBC



SAT 9 OCT 14:30

£14

A FUNNY THING HAPPENED ON THE WAY TO THE FORUM

Queen's Theatre, Hornchurch RM11 1QT

The bright lights of Broadway meet Ancient Rome in the fastest, funniest musical in the whole of the Empire!

T: 01708 443 333 **E:** james@queens-theatre.co.uk

Audio-described in-house



SAT 9 OCT 14:30

£30

PRISCILLA QUEEN OF THE DESERT THE MUSICAL

Palace Theatre, Shaftesbury Avenue, London W1D 5AY

With outrageous costumes and a score of dance floor classics, Priscilla is a fun new musical.

T: 0844 412 4648 **E:** customer.relations@seetickets.com

Audio-described by Irene Richards



Please say that you are booking for an audio-described performance so you qualify for any discounts that are available.



SAT 9 OCT 16:00

[Companion ticket same price] **£10**

WANDERLUST

Royal Court Theatre, Jerwood Theatre Upstairs, Sloane Square, London SW1W 8AS

Nick Payne's frank, compassionate and open play about sex and intimacy – and whether the two have any relation to each other – marks his Royal Court debut.

T: 020 7565 5000 **E:** ruthhawkins@royalcourttheatre.com

Audio-described by VocalEyes



MON 11 OCT 19:30 (Touch Tour 18:00)

£21

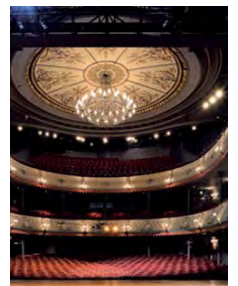
DESIGN FOR LIVING

Old Vic Theatre, 103 The Cut, London SE1 8NB

In September, Anthony Page will direct Noël Coward's provocative and unconventional romantic comedy, Design For Living, for the first time on the London stage in over 15 years.

T: 0844 871 7677 **E:** access@oldvictheatre.com

Audio-described by Roz Chalmers



MON 11 OCT 19:45

£22.50-£52.50

BLOOD BROTHERS

Royal Court Theatre, Jerwood Theatre Upstairs, Sloane Square, London SW1W 8AS

Blood Brothers tells the captivating tale of twins who, separated at birth, grow up on opposite sides of the tracks, only to meet again with tragic consequences.

T: 0844 871 7677 **E:** phoenixboxoffice@theambassadors.com

Audio-described by VocalEyes



TUE 12 OCT 19:30 (Touch Tour 18:00)

£20

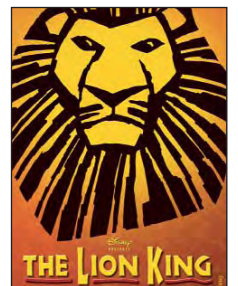
DISNEY'S THE LION KING

Lyceum Theatre, 21 Wellington Street, London WC2E 7RQ

Julie Taymor's brilliant reimagining of Disney's beloved film will redefine your expectations of theatre.

T: 020 7420 8113 **E:** lyceumbboxoffice@theambassadors.com

Audio-described by VocalEyes



SAT 16 OCT 14:30

[Companion ticket free] **£10-£25**

THE BIG FELLAH

Lyric Hammersmith, Lyric Square, Hammersmith, London W6 0QL

Richard Bean's witty and dark play spans three decades of the IRA's fight for independence from New York.

T: 0871 22 117 22 **E:** tickets@lyric.co.uk

Audio-described in-house



8 Audio-described



Please say that you are booking for an audio-described performance so you qualify for any discounts that are available.

SAT 16 OCT 15:00 & TUE 19 OCT 19:45

£11 / £13

THE COMPANY MAN

Orange Tree Theatre, 1 Clarence Street, Richmond TW9 2SA

Love, loyalty, bitterness and regret clash at a family's first reunion in 20 years.

T: 020 8940 3633 **E:** box.office@orangetreetheatre.co.uk

Audio-described by Veronika Hyks



FRI 22 OCT 19:00 & SAT 23 OCT 13:30 (Touch Tour 12:00)

£10

HAMLET

National Theatre Olivier, Upper Ground, South Bank, London SE1 9PX

Rory Kinnear plays Hamlet and Clare Higgins plays Gertrude in this new production.

T: 020 7452 3000 **E:** boxoffice@nationaltheatre.org.uk

Audio-described in-house



FRI 22 OCT-SAT 13 NOV 19:30 & 6 NOV 14:00 & 19:30

£10-£20

REASONS TO BE CHEERFUL

Theatre Royal Stratford East, Gerry Raffles Square, Stratford, London E15 1BN

Stratford East and Graeae bring you a story about a man who will do anything to get tickets to see Ian Drury, but life is complicated!

T: 020 8534 0310 **E:** afro@stratfordeast.com

Audio-described by TBC



SAT 23 OCT 14:30 (Touch Tour 13:00)

£8-£30

HAY FEVER

Rose Theatre, Kingston Upon Thames KT1 1HL

Noël Coward's comic masterpiece, Hay Fever (1924), is one of the funniest and most perfect plays in the English language.

T: 0844 412 4648 **E:** customer.relations@seetickets.com

Audio-described by William Clancy



Please say that you are booking for an audio-described performance so you qualify for any discounts that are available.



SAT 23 OCT 15:00

£12-£29

ENLIGHTENMENT

Hampstead Theatre, Eton Avenue, Swiss Cottage, London NW3 3EU

As a couple awaits news about their missing son, a net of lies and deceit engulfs them; combining suspense and comedy into a twisted thriller.

T: 020 7722 9301 **E:** access@hampsteadtheatre.com

Audio-described in-house



SUN 24 OCT 13:30 (Touch Tour 11:00)

£7-£16.50

THE GARBAGE KING

Unicorn Theatre, 147 Tooley Street, London SE1 2HZ

Based on the novel by Elizabeth Laird, The Garbage King is set in Ethiopia and is a tale of growing up and breaking free.

T: 020 7645 0560 **E:** boxoffice@unicorntheatre.com

Audio-described by VocalEyes



TUE 26 OCT 19:30

£10

IVAN AND THE DOGS

Soho Theatre, 21 Dean Street, London W1D 3NE

Based on an extraordinary true story, this spellbinding story of survival conjures the 1990s streets of Moscow through the eyes of a child.

T: 020 7478 0100 **E:** Box1@sohotheatre.com

Audio-described in-house



WED 27 OCT 19:45

£10-£27.50

FAUST

Young Vic Theatre, 66 The Cut, London SE1 8LZ

The universal tale of a man selling his soul to the devil has never been imagined quite like this before. Original score by Nick Cave.

T: 020 7922 2922 **E:** boxoffice@youngvic.org

Audio-described in-house



10 Audio-described



Please say that you are booking for an audio-described performance so you qualify for any discounts that are available.

FRI 29 OCT 14:00

£17-£21

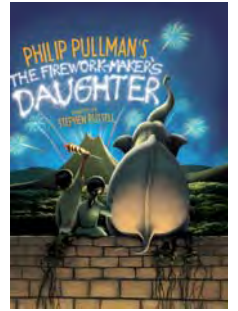
THE FIREWORK MAKER'S DAUGHTER

Churchill Theatre Bromley, High Street, Bromley BR1 1HA

Birmingham Stage Company presents this high quality stage adaptation of Phillip Pullman's wonderful children's story.

T: 0844 871 7677 **E:** bromleyaccessbookings@theambassadors.com

Audio-described by Veronika Hyks



SAT 30 OCT 14:15 (Touch Tour 12:45) & **MON 1 NOV** 19:30

£15

(Companion ticket same price)

BLOOD AND GIFTS

National Theatre Lyttelton, Upper Ground, South Bank, London SE1 9PX

An epic political thriller that sweeps from refugee camps to the corridors of power in Washington DC.

T: 020 7452 3000 **E:** boxoffice@nationaltheatre.org.uk

Audio-described in-house



SAT 30 OCT 15:00

(Companion ticket same price) **£15**

HOUSE OF GAMES

Almeida Theatre, Almeida Street, London N1 1TA

A respected psychoanalyst becomes embroiled in the world of conmen in this face-paced, complex thriller.

T: 020 7359 4404 **E:** access@almeida.co.uk

Audio-described by VocalEyes



FRI 5 NOV 19:45

£6-£12

BLACK-I

Oval House Theatre, 52-54 Kennington Oval, London SE11 5SW

Banga Naz disturbs English Rose dancing on the roof of a Mayfair mansion at 3am. As dawn breaks over London, Islam, elite London and a flick-knife collide...

T: 020 7582 7680 **E:** bookings@ovalhouse.com

Audio-described by Ruth James and Pauline Brandt



SAT 6 NOV 14:30

£7.50

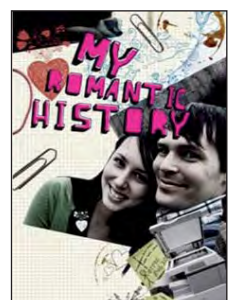
MY ROMANTIC HISTORY

Bush Theatre, Shepherd's Bush Green, London W12 8QD

A brand new comedy about love, loss and laminating machines.

T: 020 8743 5050 **E:** boxoffice@bushtheatre.co.uk

Audio-described by Jane Brambley



Please say that you are booking for an audio-described performance so you qualify for any discounts that are available.



SAT 6 NOV 14:30

£14

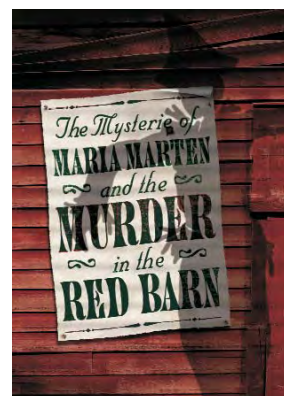
THE MYSTERIE OF MARIA MARTEN AND THE MURDER IN THE RED BARN

Queen's Theatre, Hornchurch RM11 1QT

Tongues are wagging as the drunken yokels in a small Essex village get mixed up in the biggest murder mystery of 1827...

T: 01708 443 333 **E:** james@queens-theatre.co.uk

Audio-described in-house



SAT 6 NOV 14:30

£17-£26

SPEND, SPEND, SPEND!

Richmond Theatre, The Green, Richmond, Surrey TW9 1QJ

Craig Revel Horwood directs this highly energetic musical, which follows the rags to riches to rags story of Viv Nicholson's notorious pools win.

T: 0844 871 7677 **E:** richmondboxoffice@theambassadors.com

Audio-described by Denise Rocard



SAT 6 NOV 15:30

(Companion ticket same price) **£12**

TRIBES

Royal Court Theatre, Jerwood Theatre Upstairs, Sloane Square, London SW1W 8AS

Nina Raine's second play is a fascinating dissection of belonging, family and the limitations of communication.

T: 020 7565 5000 **E:** ruthhawkins@royalcourttheatre.com

Audio-described by VocalEyes



WED 10 NOV 19:30

£30

MAMMA MIA!

Prince of Wales, Coventry Street, London W1D 6AS

The hit songs of ABBA are ingeniously woven into an enchanting tale of love, laughter and friendship.

T: 0844 482 5165 **E:** access@delmack.co.uk

Audio-described by VocalEyes



12 Audio-described



Please say that you are booking for an audio-described performance so you qualify for any discounts that are available.

SAT 13 NOV 14:30 (Touch Tour 13:30)

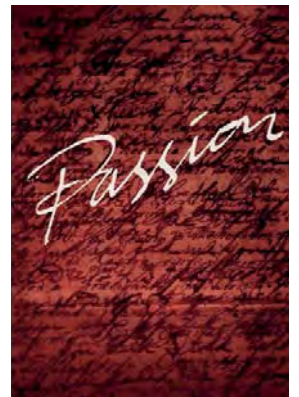
£12

PASSION

Stephen Sondheim and James Lapine's multi-award winning musical examines the power of love.

T: 020 7845 5813 **E:** access@donmarwarehouse.com

Audio-described by VocalEyes



THU 18 NOV 19:45 (Touch Tour 19:15)

£15

MACBETH

The Pit, Barbican Theatre, Silk Street, London EC2Y 8DS

Shakespeare's tragedy retold through an intricately crafted blend of text, movement and polyphonic song.

T: 0845 120 7511 **E:** access@barbican.org.uk

Audio-described by Mary Plackett and Veronica Ward



SAT 20 NOV 14:30

(Companion ticket free) **£10-£25**

BLASTED

Lyric Hammersmith, Lyric Square, Hammersmith, London W6 0QL

Still as powerful as ever, the Lyric stages the first revival of Sarah Kane's seminal, shocking play in almost 10 years.

T: 0871 22 117 22 **E:** tickets@lyric.co.uk

Audio-described in-house



SAT 20 NOV 15:00 & **TUE 23 NOV** 19:45

£11 / £13

HUNGRY GHOSTS

Orange Tree Theatre, 1 Clarence Street, Richmond TW9 2SA

In Shanghai for the Grand Prix, Tyler finds that human rights and politics invade his life.

T: 020 8940 3633 **E:** box.office@orangetreetheatre.co.uk

Audio-described by Veronika Hyks



Please say that you are booking for an audio-described performance so you qualify for any discounts that are available.



SAT 27 NOV 15:00

£12-£29

THE TRAIN DRIVER

Hampstead Theatre, Eton Avenue, Swiss Cottage, London NW3 3EU

South Africa's finest playwright, Athol Fugard, finds common humanity in a beautiful and tragic encounter.

T: 020 7722 9301 **E:** access@hampsteadtheatre.com

Audio-described in-house



SAT 11 DEC 14:00 (Touch Tour 13:30)

£28-£40

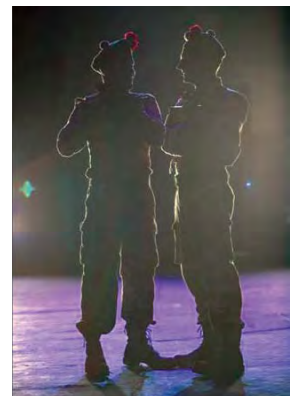
BLACK WATCH

Barbican Theatre, Silk Street, London EC2Y 8DS

Returning to the Barbican following its success at the 2009 Olivier's, Black Watch forcibly throws us into the frontline soldier's experience.

T: 0845 120 7511 **E:** access@barbican.org.uk

Audio-described by Mary Plackett and Veronica Ward



TUE 14 DEC 19:30

£10

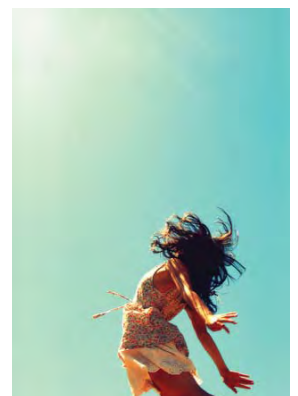
BEA

Soho Theatre, 21 Dean Street, London W1D 3NE

On Theatre explores the boundaries of human compassion through the story of young Bea, who is lively, naughty and full of life.

T: 020 7478 0100 **E:** Box1@sohotheatre.com

Audio-described in-house



SAT 18 DEC 14:30

£10

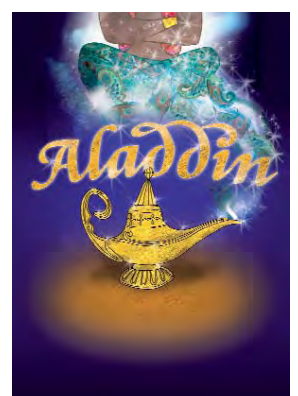
ALADDIN

Watford Palace Theatre, 20 Clarendon Road, Watford, Hertfordshire WD17 1JZ

Traditional family pantomime with live music and plenty of fun for all the family.

T: 01923 225 671 **E:** sales@watfordpalacetheatre.co.uk

Audio-described by VocalEyes



14 Audio-described



Please say that you are booking for an audio-described performance so you qualify for any discounts that are available.

SAT 18 DEC 15:00

£11-£16

JOSEPH K

Gate Theatre, Above The Prince Albert Pub, 11 Pembridge Road, Notting Hill, London W11 3HQ

Award-winning writer Tom Basden creates a reworking of Kafka's novel about one man's fight against an invisible law.

T: 020 7229 5387 **E:** gate@gatetheatre.co.uk

Audio-described by Ruth James



SAT 18 DEC 15:00 (Touch Tour 13:30)

(Companion ticket same price) **£15**

THE MASTER BUILDER

Almeida Theatre, Almeida Street, London N1 1TA

Stephen Dillane and Gemma Arterton appear in this Ibsen classic.

T: 020 7359 4404 **E:** access@almeida.co.uk

Audio-described by VocalEyes



MON 20 DEC 19:30

£11-£20

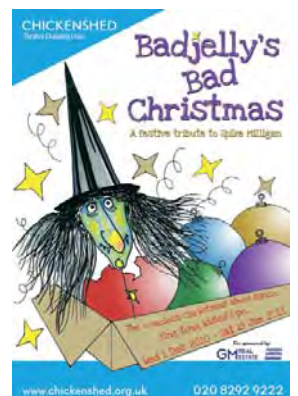
BADJELLY'S BAD CHRISTMAS

Chickenshed Theatre, Chase Side, Southgate, London N14 4PE

A festive, magical, musical journey through a treasury of Spike Milligan's best loved characters.

T: 020 8292 9222 **E:** bookings@chickenshed.org.uk

Audio-described in-house



TUE 21 DEC 19:45 & SAT 15 JAN 15:00

£11 / £13

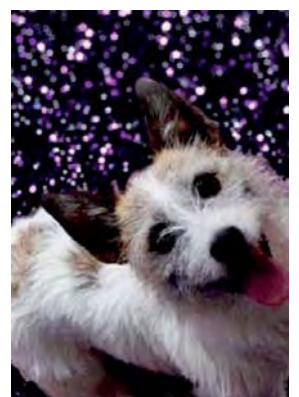
ONCE BITTEN

Orange Tree Theatre, 1 Clarence Street, Richmond TW9 2SA

A madcap French farce complete with greedy mistresses, an interfering mother-in-law, and a yapping dog.

T: 020 8940 3633 **E:** box.office@orangetreetheatre.co.uk

Audio-described by Veronika Hyks



Please say that you are booking for an audio-described performance so you qualify for any discounts that are available.



WED 22 DEC 19:30

£10-£27.50

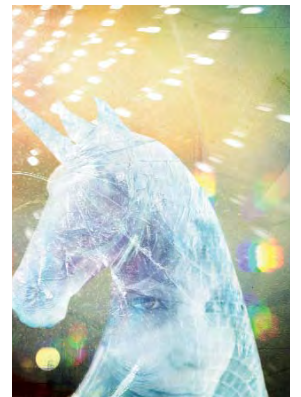
THE GLASS MENAGERIE

Young Vic Theatre, 66 The Cut, London SE1 8LZ

Tennessee Williams's deeply touching memory play and first great Broadway success takes as its subject the most fragile of all human emotions – hope.

T: 020 7922 2922 **E:** boxoffice@youngvic.org

Audio-described in-house



THU 23 DEC 13:45

£10-£20

RED RIDING HOOD

Theatre Royal Stratford East, Gerry Raffles Square, Stratford, London E15 1BN

Join us as innocent Red Riding Hood and her short-sighted grandmother meet the big bad wolf.

T: 020 8534 0310 **E:** afrost@stratfordeast.com

Audio-described by Bridget Crowley & TBC



THU 30 DEC 14:30

£10-£18

BEASTS AND BEAUTIES

Hampstead Theatre, Eton Avenue, Swiss Cottage, London NW3 3EU

Eight hilarious and gruesome fairytales to make you laugh with delight and shiver with glee.

T: 020 7722 9301 **E:** access@hampsteadtheatre.com

Audio-described in-house



THU 30 DEC 14:30 (Touch Tour 13:00)

£8-£32

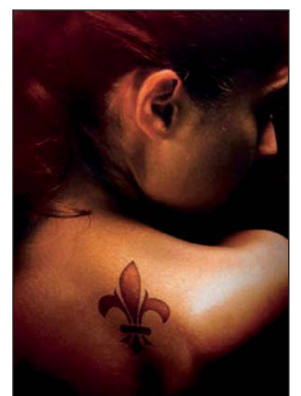
THE THREE MUSKETEERS – A NEW MUSICAL

Rose Theatre, Kingston Upon Thames KT1 1HL

Hold on to your hearts for a gripping tale of courage, reckless hope and daring this Christmas.

T: 0844 412 4648 **E:** customer.relations@seetickets.com

Audio-described by William Clancy



16 Captioned



Please say that you are booking for a captioned performance so you qualify for any discounts that are available.

SAT 4 SEP 14:30

£20

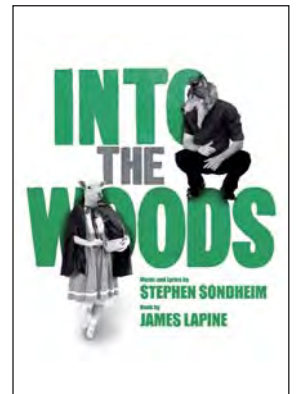
INTO THE WOODS

Regent's Park Open Air Theatre, Inner Circle, Regent's Park, London NW1 4NR

Stephen Sondheim's musical gives the Tales Of The Brothers Grimm a dark and humorous twist.

T: 0844 826 4242 **E:** boxoffice@openairtheatre.com

Captioned by STAGETEXT



WED 8 SEP 14:30 & 19:30

£40

LOVE NEVER DIES

Adelphi Theatre, The Strand, London WC2E 7NA

Andrew Lloyd Webber's new musical continuing the stories of the principal characters from The Phantom Of The Opera.

T: 0844 412 4648 **E:** customer.relations@seetickets.com

Captioned by STAGETEXT



THU 9 SEP 19:30

(Companion ticket same price) **£15**

EARTHQUAKES IN LONDON

National Theatre Cottesloe, Upper Ground, South Bank, London SE1 9PX

Mike Bartlett's epic play examines our fear of the future and guilty pleasure in the excesses of the present.

T: 020 7452 3000 **E:** boxoffice@nationaltheatre.org.uk

Captioned by STAGETEXT



FRI 10 SEP 19:30 & **SAT 11 SEP** 14:30

£30

WICKED

Apollo Victoria Theatre, 17 Wilton Road, London SW1V 1LG

Discover the incredible untold story of an unlikely but profound friendship between two girls and their extraordinary adventures in Oz.

T: 020 7828 7074 **E:** apolloboxoffice@theambassadors.com

Captioned by STAGETEXT



Please say that you are booking for a captioned performance so you qualify for any discounts that are available.

THU 16 SEP 19:30

£11-£16

HOW TO BE AN OTHER WOMAN

Gate Theatre, Above The Prince Albert Pub, 11 Pembridge Road, Notting Hill, London W11 3HQ

A new piece about love, ambition and putting yourself in someone else's shoes.

T: 020 7229 5387 **E:** gate@gatetheatre.co.uk

Captioned by Miranda Yates



SAT 18 SEP 14:30

(Companion ticket free) **£10-£25**

PUNK ROCK

Lyric Hammersmith, Lyric Square, Hammersmith, London W6 0QL

Intelligent. Articulate. F***ed. Simon Stephen's award-winning play returns for two weeks prior to a national tour.

T: 0871 22 117 22 **E:** tickets@lyric.co.uk

Captioned in-house



MON 20 SEP 19:30

£25

THE PRISONER OF SECOND AVENUE

Vaudeville Theatre, Strand, London WC2R 0NH

Following his sell-out success in Speed-The-Plow, Hollywood star Jeff Goldblum makes a hotly-anticipated return to the London stage in Neil Simon's brilliantly observed award-winning comedy.

T: 0844 871 7677 **E:** access@oldvictheatre.com

Captioned by Claire McIntyre



TUE 21 SEP 14:15

(Companion ticket same price) **£15**

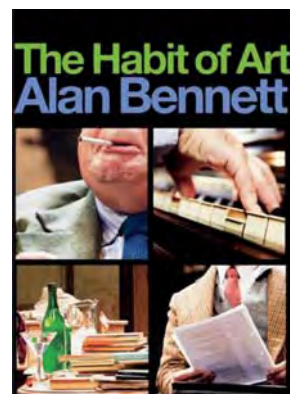
THE HABIT OF ART

National Theatre Lyttelton, Upper Ground, South Bank, London SE1 9PX

Your last chance to see Alan Bennett's latest smash-hit at the NT, prior to a UK tour.

T: 020 7452 3000 **E:** boxoffice@nationaltheatre.org.uk

Captioned by STAGETEXT



18 Captioned



Please say that you are booking for a captioned performance so you qualify for any discounts that are available.

THU 23 SEP 19:30

£10

RE-ORIENTATIONS

Soho theatre, 21 Dean Street, London W1D 3NE

An astonishing visual feast exploring love, sexuality and performance, as lives collide in contemporary Asia.

T: 020 7478 0100 **E:** Box1@sohotheatre.com

Captioned in-house



THU 23 SEP 20:00

£10- £18

BEAUTIFUL BURNOUT

York Hall, 5-15 Old Ford Road, Bethnal Green, London E2 9PJ

Beautiful Burnout is a thrilling piece of physical theatre immersing the audience in the world of boxing.

T: 0845 120 7511 **E:** access@barbican.org.uk

Captioned by STAGETEXT



SAT 25 SEP 14:30

£7.50

THE ALIENS

Bush Theatre, Shepherds Bush Green, London W12 8QD

The Aliens introduces two new cult heroes and puts modern day America under the microscope to ask what happened to the generation who never grew up.

T: 020 8743 5050 **E:** boxoffice@bushtheatre.co.uk

Captioned by TBC



SAT 25 SEP 14:30

£15-£26

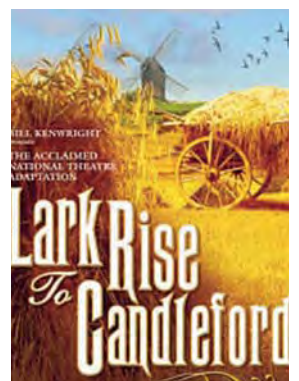
LARK RISE TO CANDLEFORD

Churchill Theatre Bromley, High Street, Bromley BR1 1HA

After the highly successful BBC television adaptation, this heart warming play comes back to the stage.

T: 0844 871 7677 **E:** bromleyaccessbookings@theambassadors.com

Captioned by STAGETEXT



ACCESS

LONDON THEATRE

VENUE INFORMATION 2010

Detailed access information for over 70 theatres situated across London, including full addresses, useful phone and email contacts, details of facilities available, such as disabled toilets, and vital information for wheelchair users.

For further information visit www.officiallondontheatre.co.uk/access

Theatre	Address	Telephone number	Email/fax/ minicom or typetalk	Disabled toilets situated	Number of wheelchair spaces	Sound amplification	Access from street to foyer	Access from theatre foyer to seats	Level access	Stair lift/ lift/ramp available
Adelphi	Strand, London, WC2E 7NA	0844 412 4648	customerrelations@seetickets.com	Foyer & Stalls	Stalls x 2		ramp	41 to Dress Circle, 70 to Upper Circle	To Stalls	
Aldwych	Aldwych, London, WC2B 4DF	020 7836 5537	access@aldwychtheatre.co.uk	Circle	Circle x 4	Sennheiser Infrared	ramp	15 to back of Dress Circle, 26 to Stalls, 50+ to Grand Circle	To front of Dress Circle	
Almeida	Almeida Street, London N1 1TA	020 7288 4999	access@almeida.co.uk	Foyer	Stalls x 2+	Sennheiser Infrared		27 steps to Circle		Sloped walkway to Stalls
Ambassadors	West Street, London WC2H 9ND	020 7395 5405	access@theambassadors theatre.co.uk				steps	26 to Stalls, 5 to Circle		
Apollo	Shaftesbury Avenue, London W1D 7EZ	0844 412 4648	customerrelations@seetickets.com	Stalls	Stalls x 2	Sennheiser Infrared	steps & lift	22 to Stalls, 12 to Dress Circle, 41 to Upper Circle, 48 to Balcony		Stair lift to Stalls
Apollo Victoria	Wilton Street, London SW1V 1LG	020 7828 7074	apollovic.bookings@livenation.co.uk	Foyer	Circle x 4	Induction Loop & Sennheiser Infrared	steps & lift	29 to Stalls, 13 to Dress Circle		To Dress Circle
Arts	Great Newport Street, London WC2H 7JB	020 7828 7074	boxoffice@artstheatre.london.com	Circle	Circle x 2		ramp	5 to Circle, 19 to Stalls		Ramp from street to Dress Circle
Barbican (including The Pit)	Silk Street, London EC2Y 8DS	0845 120 1500	020 7382 7297 (minicom)	Circle Foyer Stalls	Stalls x 4 Circle x 4	Sennheiser Infrared	steps	25 to Stalls, 27 to Dress Circle, 20 to Upper Circle, 15 to Gallery	Row T Stalls, Row B Dress Circle	Lifts to all floors
Cambridge	Earlham Street, London WC2H 9HU	020 7087 7777	customerrelations@seetickets.com	Stalls	Stalls x 2	Sennheiser Infrared	ramp	4 to Stalls, 31 to Dress Circle, 64 to Upper Circle		Level access Lift
Churchill	High Street, Bromley, Kent BR1 1HA	0870 060 6641	bromleyaccessbookings@theambassadors.com	Circle Foyer	Circle x 9 Stalls x 1	Sennheiser Infrared				Yes
Comedy	Panton Street, London SW1Y 4DN	0871 297 5477	specialistsales@theambassadors.com	Foyer	Dress Circle x 4		steps & ramp			
Criterion	2 Jermyn Street, London SE1Y 4XA	020 7839 8811	admin@critterion-theatre.co.uk	Upper Circle	Upper Circle x 2	Sennheiser Infrared		30 steps to Dress Circle, 60 to Stalls	To Upper Circle	
Dominion	Tottenham Court Road, London W1T 7AQ	020 7636 2295	dominionboxoffice@nederland.co.uk.co.uk	Stalls (next to box)	Stalls x 4	Induction Loop	ramp	10 to Stalls, 20+ to Dress Circle	To Box	Stair lift to Stalls
Donmar Warehouse	Earlham Street, London WC2H 9LX	020 7845 5813	donmarmanager@theambassadors.com	Circle	Stalls x 1	Induction Loop	steps & ramp			Lift

Theatre	Address	Telephone number	Email/fax/ minicom or typetalk	Disabled toilets situated	Number of wheelchair spaces	Sound amplification	Access from street to foyer	Access from theatre foyer to seats	Level access	Stair lift/ lift/ramp available
Drill Hall	Chenies Street, London WC1E 7ET	020 7307 5060	box.office@drillhall.co.uk	Foyer	Stalls x 4	Induction Loop	ramp		To Drill Hall 1	Lift to Drill Hall 2
Drury Lane, Theatre Royal	Catherine Street, London WC2B 5JF	0844 412 4648	customerrelations@seetickets.com	Stalls	Stalls x 4	Induction Loop & Sennheiser Infrared	steps	20 down then 17 up to Stalls, 39 to Dress Circle, 61 to Upper Circle		
Duchess	Catherine Street, London WC2B 5LA	0844 412 4648	customerrelations@seetickets.com	Stalls	Stalls x 2	Sennheiser Infrared	steps	20 to Stalls, 11 to Dress Circle		
Duke of York's	St Martins Lane, London WC2N 4BG	0870 060 6623	doyboxoffice@theambassadors.com	Circle	Circle x 2		steps	23 to Stalls, 23 to Upper Circle	Royal Circle Row C (Wheelchair spaces)	
Fortune	Russell Street, London WC2B 5HH	0870 060 6626	fortuneboxoffice@theambassadors.com			Induction Loop & Sennheiser Infrared		21 to Stalls, 7 to Dress Circle, 40 to Upper Circle		
Garrick	Charing Cross Road, London WC2H 0HH	0844 412 4648	customerrelations@seetickets.com	Foyer	Dress Circle x 3	Sennheiser Infrared	ramp	24 steps to Stalls, 33 to Upper Circle	Dress Circle	
Gate	Pembroke Road, Notting Hill Gate, London W11 3HQ	020 7229 0706	gate@gatetheatre.co.uk	Foyer		Induction Loop	steps			
Gielgud	Shaftesbury Avenue, London W1D 6AR	0844 482 5137	access@delmack.co.uk	Foyer	Circle x 2	Sennheiser Infrared	steps & ramp	20 to Stalls, 30 to Grand Circle		Ramp to Dress Circle
Greenwich Playhouse	Greenwich High Road, London SE10 8JA	020 8858 9256	boxoffice@galleontheatre.co.uk							
Greenwich Theatre	Crooms Hill, London SE10 8ES	020 8858 7755	boxoffice@greenwichtheatre.org.uk	Foyer	Circle x 2	Sennheiser Infrared	ramp	2 flights of stairs to auditorium		Lift to Auditorium
Hackney Empire	291 Mare Street, London E8 1EJ	020 8510 4500	frank.sweeney@hackneyempire.co.uk	Circle Foyer Stalls	Stalls x 5		ramp		Stalls	Lift to Dress Circle, Upper Circle and Gallery
Hampstead / Hampstead Studio	Eton Avenue, Swiss Cottage, London NW3 3EU	020 7722 9301	access@hampsteadtheatre.com	Circle Foyer Stalls	Stalls x 5	Sennheiser Infrared	ramp		Yes	Yes
Haymarket, Theatre Royal	Suffolk Street, London SW1Y 4HT	020 7930 8800	tx@trh.co.uk	Stalls	Stalls x 1	Sennheiser Infrared	steps	28 up to Royal Circle, 60+ to Upper circle and Gallery		

Theatre	Address	Telephone number	Email/fax/ minicom or typetalk	Disabled toilets situated	Number of wheelchair spaces	Sound amplification	Access from street to foyer	Access from theatre foyer to seats	Level access	Stair lift/ lift/ramp available
Her Majesty's	Haymarket, London SW1Y 4QL	0844 412 2707	customerrelations@seetickets.com	Stalls	Stalls x 4	Induction Loop	ramp	18 to Stalls, 32 to Royal Circle, 62 to Grand Circle, 89 to Balcony		
Leicester Square Theatre	Leicester Place, London WC2H 7BX	0844 847 2475	boxoffice@leicestersquaretheatre.com							
London Coliseum	St.Martin's Lane, London WC2N 4ES	0871 911 2244	access@eno.org	Balcony Circle Stalls	Stalls x 8, Circle x 2	Induction Loop & Sennheiser Infrared	ramp			Lift to all Auditorium levels
London Palladium	Argyll Street, London W1F 7TF	020 7087 7960	customer:relations@seetickets.com	Stalls	Stalls x 4	Induction Loop & Sennheiser Infrared	ramp	26+ to Royal Circle, 47+ to Grand Circle		Stair lift
Lyceum	Wellington Street, London WC2E 7RQ	020 7420 8113	lyceumbxofficeclerks@theambassadors.com	Stalls	Stalls x 8	Induction Loop & Sennheiser Infrared	steps	32 steps to Royal Circle, 82 to Grand Circle	Stalls	Lift to Royal or Grand Circle
Lyric	Shaftesbury Avenue, London W1D 7ES	0844 412 4648	customer:relations@seetickets.com	Royal Retiring Room (next to boxes)	Boxes C, D & E	Sennheiser Infrared	ramp	24 to Stalls, 28 to Upper Circle, 60 to Balcony	To Boxes C-E and Dress Circle	
Lyric Hammersmith	King Street, London W6 0QL	0871 221 1722	enquiries@lyric.co.uk	Foyer Stalls	Main theatre Stalls x 4, Studio x 9	Induction Loop & Sennheiser Infrared	ramp & lift	33 to Stalls, 26 to Dress Circle, 26 to Upper Circle		Lift to all levels
National	South Bank, London SE1 9PX	020 7452 3000 / 020 7452 3400	access@nationaltheatre.org.uk	Foyer	Stalls (x 3 in Olivier, x 4 in Lyttelton, x 2 in Cottesloe)	Sennheiser Infrared		1 to Olivier	Lyttelton & Cottesloe	Lifts and ramps to all levels
New End	27 New End, Hampstead, London NW3 JD	0870 033 2733	020 7794 4044 (fax)	Foyer	Stalls x 2		steps & ramp		Yes	
New London	Drury Lane, London WC2B 5PQ	0844 412 4648	customer:relations@seetickets.com	Foyer	Stalls x 2	Sennheiser Infrared	ramp	65 to Dress Circle		Lift to Stalls
New Wimbledon	The Broadway, Wimbledon SW19 10G	0844 871 7677	wimbledonboxoffice@theambassadors.com	Stalls	Main Theatre Stalls x 9, Unrestricted in Studio	Induction Loop & Sennheiser Infrared	steps			Lift to Stalls
Noël Coward	St Martins Lane, London WC2N 4AU	0844 482 5137	access@delmack.co.uk	Foyer	Box M x 1, Box L x 1	Sennheiser Infrared	ramp	30 to Stalls, 30 to Grand Circle, 40 to Balcony	Box M & L	Ramp

Theatre	Address	Telephone number	Email/fax/ minicom or typetalk	Disabled toilets situated	Number of wheelchair spaces	Sound amplification	Access from street to foyer	Access from theatre foyer to seats	Level access	Stair lift/ lift/ramp available
Novello	Aldwych, London WC2B 4LD	0844 482 5137	access@delmack.co.uk	Circle	Circle x 2	Sennheiser Infrared	steps	20 to Stalls, 10 to Dress Circle		Chairlift
Old Vic	The Cut, Waterloo, London SE1 8NB	0844 871 7677	access@oldvictheatre.com	Stalls	Stalls x 1	Sennheiser Infrared	steps & ramp	7 to Stalls, 20+ to Dress Circle		
Open Air	Inner Circle Regents Park, London NW1 4NR	0844 826 4242	boxoffice@ openairtheatre.com	Foyer	Stalls x 38	Radio Signal	ramp		Yes	
Orange Tree	Clarence Street, Richmond TW9 2SA	020 8940 3633	meg.dobson@ orangetreetheatre.com	Foyer	Stalls x 2	Induction Loop & Sennheiser Infrared	ramp			Ramp
Oval House	Kennington Oval, London SE11 5SW	020 7582 7680	info@ovalhouse.com	Foyer	Stalls x 5	Induction Loop	ramp		Stalls	
Palace	Shaftesbury Avenue, London W1D 5AY	0844 412 4648	customer.relations@ seeickets.com	Stalls	Stalls x 3	Induction Loop & Williams Sound Infrared	steps	23 to Stalls from foyer, 30 to Dress Circle, 49 to Grand Circle, 70 to Balcony	Stalls	
Peacock	Portugal Street, London WC2A 2HT	0844 871 0900	020 7863 8015 (minicom) / ticket.office@sadlerswell.com	Foyer	Circle x 2	Sennheiser Infrared	ramp			Ramp
Phoenix	Charing Cross Road, London WC2H 0JP	0844 871 7677	phoenixboxoffice@ theambassadors.com	Circle	Circle x 1	Induction Loop & Sennheiser Infrared	steps	24 to Stalls, 21 to Dress Circle, 42 to Upper Circle		
Piccadilly	Denman Street, London W1D 7DY	0844 871 7677	piccadillyboxoffice@ theambassadors.com	Royal Circle (street level)	Royal Circle x 3	Sennheiser Infrared	level access	22 to Stalls, 26 to Royal Circle, 70 to Grand Circle	Royal Circle	
Playhouse	Northumberland Avenue, London WC2N 5DE	0844 871 7677	ticketcentre@ theambassadors.com	Foyer	Stalls x 6	Induction Loop & Sennheiser Infrared	ramp	28 to Dress Circle, 82 to Upper Circle	To Stalls	
Potka	The Broadway, London SW19 1SB	020 8543 4888	kim@polka.theatre.com	Foyer	Main Theatre Stalls x 6, x 2 in Adventure Theatre)	Induction Loop	ramp			Lift
Prince Edward	Old Compton Street, London W1D 4HS	0844 482 5187	petboxoffice@ delfont-mackintosh.com	Foyer	Dress Circle x 2, Box x 1	Sennheiser Infrared	ramp	22 to Stalls, 13 to Dress Circle, 42 to front of Grand Circle, 72 to back of Grand Circle	To Box 1	
Prince of Wales	Coventry Street, London W1D 6AS	0844 482 5137 / 0844 482 5115	POWAccess@ delmack.com	Foyer	Stalls x 3	Sennheiser Infrared	ramp	70 to Dress Circle	To Stalls	

Theatre	Address	Telephone number	Email/fax/ minicom or typetalk	Disabled toilets situated	Number of wheelchair spaces	Sound amplification	Access from street to foyer	Access from theatre foyer to seats	Level access	Stair lift/ lift/ramp available
Queen's	Shaftesbury Avenue, London W1D 6BA	0844 482 5137	access@queens-theatre.com	Circle Foyer Stalls	Dress Circle x 2	Sennheiser Infrared	steps		To Dress Circle	
Richmond	The Little Green, Richmond TW9 1QL	0870 060 6651	richmondboxoffice@ theambassadors.com	Stalls	Stalls x 4	Induction Loop & Sennheiser Infrared	ramp		To Stalls	
Riverside Studios	Crisp Road, London W6 9RL	020 8237 1111	online@ riversidestudios.co.uk	Stall Foyer	Studio 1 x 2, Studio 2 x 4, Studio 3 x 2, Cinema x 2	Induction Loop in cinema only			Yes	Lift to Cinema
Rose Theatre	24-26 High Street, Kingston KT1 1HL	020 7087 7660	customer:relations@ seetickets.com	Foyers	Stalls x 5, Circle x 5	Induction Loop & Sennheiser Infrared		21 to Dress Circle, 43 to Upper Circle	To Stalls	Lift to Dress Circle and Upper Circle
Roundhouse	Chalk Farm Road, London NW1 8EH	0844 482 8008	boxoffice@ roundhouse.org.uk	Circle Foyer Stalls	Stalls x 8, Circle x 4	Sennheiser Infrared	level access	8 to Stalls	Yes	Yes
Royal Albert Hall	Kensington Grove, London SW7 2AP	020 7838 3110	boxofficeenquiries@ royalalbert.com	Foyer	Stalls x 12, Circle x 6	Induction Loop & Sennheiser Infrared	step, ramp & lift	5 to Loggia Boxes		Lifts to Grand Tier Second Tier, Circle and Gallery
Royal Court	Sloane Square, London SW1W 8AS	020 7565 5000 / 020 7565 5013	gemmafrayne@ royalcourttheatre.com	Foyer	Stalls x 12, Circle x 6	Induction Loop & Sennheiser Infrared	ramp			Lift to auditoriums
Royal Festival Hall	Belvedere Road, London SE1 8XX	0871 663 2500	0871 663 2594 (fax)	Circle Foyer Stalls	Stalls x 12+, Circle x 6+	Sennheiser Infrared	steps, ramp & lift		Yes	Yes
Royal Opera House	Covent Garden, London WC2E 9DD	020 7304 4000	020 7212 9228 (minicom) / 020 7212 9460 (fax)	Circle Foyer Stalls	Circle x 6+	Sennheiser Infrared	lift		Yes	Yes
Sadler's Wells	Rosebery Avenue, London EC1R 4TN	0844 871 0090	020 7863 8015 (minicom) / ticket.office@sadlerswell.com	Circle Stalls	Stalls x 3, Circle x 1	Sennheiser Infrared	ramp			Lift to all levels
Savoy	The Strand, London WC2R 0ET	0844 871 7677	savoyboxoffice@ theambassadors.com	Dress Circle	Dress Circle x 1	Radio Signal	ramp	75 to Stalls, 32 to Dress Circle, 2 to Upper Circle	To Dress Circle	
Shaftesbury	Shaftesbury Avenue, London WC2H 8DP	020 7379 5399	020 7836 0466 (fax)	Circle	Stalls x 4	Induction Loop	ramp		To Royal Circle	
Shakespeare's Globe	New Globe Walk, London SE1 9DT	020 7902 1409	info@ shakespearesglobe.com	Circle Foyer Stalls	Stalls x 8	Induction Loop	ramp		Yes	

Theatre	Address	Telephone number	Email/fax/ minicom or typetalk	Disabled toilets situated	Number of wheelchair spaces	Sound amplification	Access from street to foyer	Access from theatre foyer to seats	Level access	Stair lift/ lift/ramp available
Shaw	Euston Road, London NW1 2AJ	0870 033 2600	020 7388 7555 (fax)	Foyer	Stalls x 5		ramp		Yes	
Soho	Dean Street, London W1D 3NE	020 7478 0100	box1@sohotheatre.com	Studio auditorium Foyer	Main Theatre x 2, Studio x 5	Induction Loop (Studio) & Sennheiser Infrared (Auditorium)		36 to 1st floor, 17 more to Studio	Yes	Lift
Southwark Playhouse	Tooley Street/Bermondsey Street, London SE1 2TF	020 7407 0234	admin@southwark playhouse.co.uk	Foyer	Stalls x 2		steps & ramp		Yes	
St Martin's	West Street, London WC2H 9NZ	020 7834 3034	access@ smartinstheatre.co.uk	Circle	Circle x 2	Sennheiser Infrared	steps	20+ to Stalls, 5 to Dress Circle		Box C and Dress Circle via ramp
Trafalgar Studios	Whitehall, London SW1A 2DY	0844 871 7677	trafalgarboxoffice@ theambassadors.com				steps	14 up to Studio 1, 28 down to Studio 2		
Tricycle	Kilburn High Road, London NW6 7JR	020 7328 1000	boxoffice@ tricycle.co.uk	Foyer	Circle x 2	Induction Loop & Sennheiser Infrared	ramp	7 steps to Royal Circle		Yes
UCL Bloomsbury	Gower Street, London WC1H 0AH	020 7679 2915	g.cummings@ucl.ac.uk	Foyer	Stalls x 2	Induction Loop		15 down to Lower Ground, 7 to Stalls, 28+ to Dress Circle		Yes
Unicorn Theatre	Tooley Street, London SE1 2HZ	020 7645 0560	boxoffice@ unicorntheatre.com	Circle Foyer Stalls	Stalls x 30	Sennheiser Infrared	steps & ramp	22 to Lower Ground, 57 up to Weston Level to Clore Studio	Yes	Lift to all floors
Vaudeville	Strand, London WC2R 0NH	020 7836 7969	vaudevilleboxoffice@ nimaxtheatre.com		Stalls x 2		steps	6 down to Stalls, 22 up to Dress Circle, 54 up to Upper Circle		
Victoria Palace	Victoria Street, London SW1E 5EA	020 7836 1443	access@victoriapalace.co.uk	Stalls	Stalls x 2	Induction Loop & Sennheiser Infrared		4 down to Stalls, 28 to Dress Circle	Yes	
Warehouse Theatre	Dingwall Road, Croydon CR0 2NF	020 8680 4060	020 8688 6699 (fax)	Foyer		Induction Loop	20 steps to studio			
Wyndhams	Charing Cross Road, London WC2H 0DA	0844 482 5160	wyndhamsbox@ delfont-mackintosh.com		Stalls (Box A) x 2	Induction Loop & Sennheiser Infrared	steps	21 down to Stalls, 23 to Royal Circle, 40 to Grand Circle, 96 to Balcony		
Young Vic	The Cut, Waterloo, London SE1 9LZ	020 7922 2922	info@youngvic.org	Foyer & Circle	6 in all areas	Sennheiser Infrared			Yes	Lift to all floors

London Blue Badge Parking Guide

Published by PIE Guides, the London Blue Badge Parking Guide incorporates the Society of London Theatre's Access Guide to London's theatres and is available to our readers at a special discounted rate!

The guide includes:

- Detailed access information for more than 70 London theatres
- Useful information for the registered disabled blue badge driver
- Information regarding accessible tube stations, taxi ranks, wheelchair-accessible toilets and Shopmobility centres
- A useful directory of services

To order the guide, visit www.thepieguide.com/shop or call **0844 847 0875** and receive a **special 25% discount!**



Please say that you are booking for a captioned performance so you qualify for any discounts that are available.

SAT 25 SEP 14:30

£10-£85

LES MISÉRABLES

Barbican Theatre, Silk Street, London EC2Y 8DS

A brand new 25th anniversary production of Boubil and Schönberg's legendary musical.

T: 0845 120 7511 **E:** access@barbican.org.uk

Captioned by STAGETEXT



TUE 28 SEP 19:30

(Companion ticket same price) **£12**

CLYBOURNE PARK

Royal Court Theatre, Jerwood Theatre Upstairs, Sloane Square, London SW1W 8AS

Set in 1959 and then 2009, Bruce Norris's satirical new play explores the fault line between race and property.

T: 020 7565 5000 **E:** ruthhawkins@royalcourttheatre.com

Captioned by STAGETEXT



THU 7 OCT 19:30 (Touch Tour 18:00)

£21

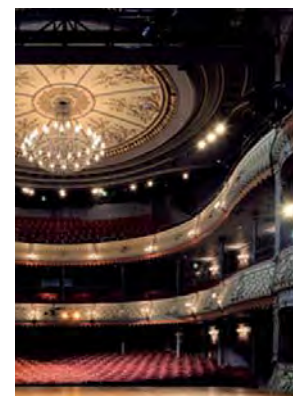
DESIGN FOR LIVING

Old Vic Theatre, 103 The Cut, London SE1 8NB

In September, Anthony Page will direct Noël Coward's provocative and unconventional romantic comedy, Design For Living, for the first time on the London stage in over 15 years.

T: 0844 871 7677 **E:** access@oldvictheatre.com

Captioned by Claire McIntyre



SAT 9 OCT 14:30

(Companion ticket free) **£10-£25**

THE BIG FELLAH

Lyric Hammersmith, Lyric Square, Hammersmith, London W6 0QL

Richard Bean's witty and dark play spans three decades of the IRA's fight for independence from New York.

T: 0871 22 117 22 **E:** tickets@lyric.co.uk

Captioned in-house



28 Captioned



Please say that you are booking for a captioned performance so you qualify for any discounts that are available.

MON 11 OCT 19:30

£22.50-£52.50

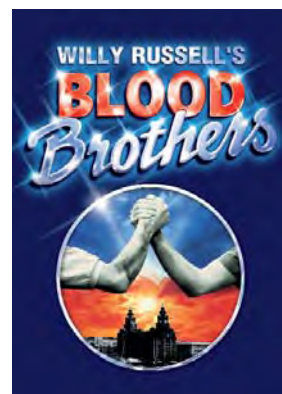
BLOOD BROTHERS

Phoenix Theatre, Charing Cross Road, London WC2H 0JP

Blood Brothers tells the captivating tale of twins who, separated at birth, grow up on opposite sides of the tracks, only to meet again with tragic consequences.

T: 0844 871 7677 **E:** phoenixboxoffice@theambassadors.com

Captioned by STAGETEXT



TUE 12 OCT 19:30

£30

PRISCILLA QUEEN OF THE DESERT THE MUSICAL

Palace Theatre, Shaftesbury Avenue, London W1D 5AY

With outrageous costumes and a score of dance floor classics, Priscilla is a fun new musical.

T: 0844 412 4648 **E:** customer.relations@seetickets.com

Captioned by STAGETEXT



WED 13 OCT 19:30

£35

DIRTY DANCING – THE CLASSIC STORY ON STAGE

Aldwych Theatre, Aldwych, London WC2B 4LD

Seen by millions across the globe, this worldwide smash hit tells the classic story of an unforgettable life changing journey of first love.

T: 020 7379 3367 **E:** access@aldwychtheatre.co.uk

Captioned by STAGETEXT



SAT 16 OCT 15:00 & SAT 30 OCT 19:30 (Speech to text post show talkback)

£15

(Companion ticket same price)

HOUSE OF GAMES

Almeida Theatre, Almeida Street, London N1 1TA

A respected psychoanalyst becomes embroiled in the world of conmen in this face-paced, complex thriller.

T: 020 7359 4404 **E:** access@almeida.co.uk

Captioned in-house



Please say that you are booking for a captioned performance so you qualify for any discounts that are available.

SAT 16, TUE 19, FRI 29 OCT, MON 1, WED 3 NOV 19:30, WED 20 OCT 19:00, SAT 13 NOV 15:00 £12
(Companion ticket same price)

TRIBES

Royal Court Theatre, Jerwood Theatre Upstairs, Sloane Square, London SW1W 8AS

Nina Raine's second play is a fascinating dissection of belonging, family and the limitations of communication.

T: 020 7565 5000 **E:** ruthhawkins@royalcourttheatre.com

Captioned in-house



TUE 19 OCT 19:30 (Companion ticket same price) £15

OR YOU COULD KISS ME

National Theatre Cottesloe, Upper Ground, South Bank, London SE1 9PX

Neil Bartlett collaborates with the War Horse team to create this fierce and tender meditation on love, memory and the power of the unspoken.

T: 020 7452 3000 **E:** boxoffice@nationaltheatre.org.uk

Captioned by STAGETEXT



WED 20 OCT 19:30 £12-£29

ENLIGHTENMENT

Hampstead Theatre, Eton Avenue, Swiss Cottage, London NW3 3EU

As a couple awaits news about their missing son, a net of lies and deceit engulfs them; combining suspense and comedy into a twisted thriller.

T: 020 7722 9301 **E:** access@hampsteadtheatre.com

Captioned by STAGETEXT



WED 20 OCT 19:30 £8.50-£29.50

HAY FEVER

Rose Theatre, Kingston Upon Thames KT1 1HL

Noël Coward's comic masterpiece, Hay Fever (1924), is one of the funniest and most perfect plays in the English language.

T: 0844 412 4648 **E:** customer.relations@seetickets.com

Captioned by STAGETEXT



30 Captioned



Please say that you are booking for a captioned performance so you qualify for any discounts that are available.

THU 21 OCT 19:45

£10-£27.50

FAUST

Young Vic Theatre, 66 The Cut, London SE1 8LZ

The universal tale of a man selling his soul to the devil has never been imagined quite like this before. Original score by Nick Cave.

T: 020 7922 2922 **E:** boxoffice@youngvic.org

Captioned in-house



FRI 22 OCT-SAT 13 NOV 19:30 & **6 NOV** 14:00 & 19:30

£10-£20

REASONS TO BE CHEERFUL

Theatre Royal Stratford East, Gerry Raffles Square, Stratford, London E15 1BN

Stratford East and Graeae bring you a story about a man who will do anything to get tickets to see Ian Drury, but life is complicated!

T: 020 8534 0310 **E:** afrost@stratfordeast.com

Captioned by TBC



TUE 26 OCT 19:30

£12

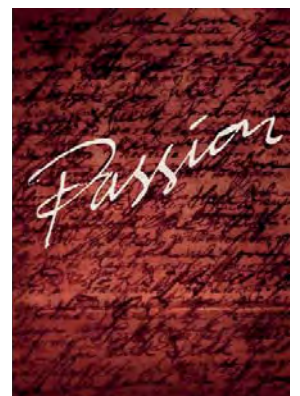
PASSION

Donmar Warehouse, 41 Earlham Street, London WC2H 9LX

Stephen Sondheim and James Lapine's multi-award winning musical examines the power of love.

T: 020 7845 5813 **E:** access@donmarwarehouse.com

Captioned by STAGETEXT



WED 27 OCT 19:00

£10

HAMLET

National Theatre Olivier, Upper Ground, South Bank, London SE1 9PX

Rory Kinnear plays Hamlet and Clare Higgins plays Gertrude in this new production.

T: 020 7452 3000 **E:** boxoffice@nationaltheatre.org.uk

Captioned by STAGETEXT



Please say that you are booking for a captioned performance so you qualify for any discounts that are available.

FRI 28 OCT 19:30

£10

IVAN AND THE DOGS

Soho Theatre, 21 Dean Street, London W1D 3NE

Based on an extraordinary true story, this spellbinding story of survival conjures the 1990s streets of Moscow through the eyes of a child.

T: 020 7478 0100 **E:** Box1@sohotheatre.com

Captioned in-house



TUE 9 NOV 19:45

(Companion ticket same price) £10

RED BUD

Royal Court Theatre, Jerwood Theatre Upstairs, Sloane Square, London SW1W 8AS

A new American drama about the creeping spread of middle age.

T: 020 7565 5000 **E:** ruthhawkins@royalcourttheatre.com

Captioned by STAGETEXT



FRI 12 NOV 17:00

£30

MAMMA MIA!

Prince of Wales, Coventry Street, London W1D 6AS

The hit songs of ABBA are ingeniously woven into an enchanting tale of love, laughter and friendship.

T: 0844 482 5165 **E:** access@delmack.co.uk

Captioned by STAGETEXT



SAT 13 NOV 14:30

£TBC

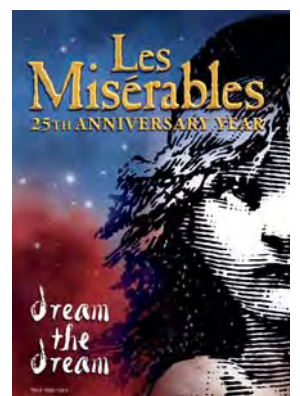
LES MISÉRABLES

Queen's Theatre, Shaftesbury Avenue, London W1D 6BA

Cameron Mackintosh's legendary production of Les Misérables is indisputably the world's most popular musical.

T: 0844 482 5165 **E:** access@delmack.co.uk

Captioned by STAGETEXT



32 Captioned



Please say that you are booking for a captioned performance so you qualify for any discounts that are available.

SAT 13 NOV 14:30

£7.50

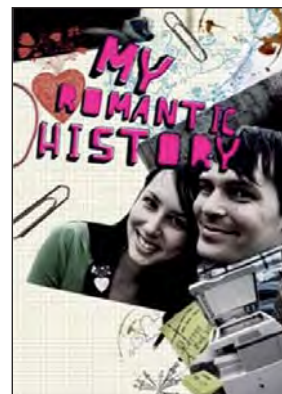
MY ROMANTIC HISTORY

Bush Theatre, Shepherds Bush Green, London W12 8QD

A brand new comedy about love, loss and laminating machines.

T: 020 8743 5050 **E:** boxoffice@bushtheatre.co.uk

Captioned by TBC



THU 18 NOV 19:00 (Includes captioned post-show discussion)

£17-£25

THE THREE MUSKETEERS AND THE PRINCESS OF SPAIN

Richmond Theatre, The Green, Richmond, Surrey TW9 1QJ

D'Artagnan and the Three Musketeers must save the city and the Princess in this swashbuckling, hilarious, action packed adventure for all the family.

T: 0844 871 7677 **E:** richmondboxoffice@theambassadors.com

Captioned in-house



SAT 20 NOV 14:30

(Companion ticket free) **£10-£25**

BLASTED

Lyric Hammersmith, Lyric Square, Hammersmith, London W6 0QL

Still as powerful as ever, the Lyric stages the first revival of Sarah Kane's seminal, shocking play in almost 10 years.

T: 0871 22 117 22 **E:** tickets@lyric.co.uk

Captioned in-house



THU 25 NOV 19:30

£20.50

DISNEY'S THE LION KING

Lyceum Theatre, 21 Wellington Street, London WC2E 7RQ

Julie Taymor's brilliant reimagining of Disney's beloved film will redefine your expectations of theatre.

T: 020 7420 8113 **E:** lyceumbboxoffice@theambassadors.com

Captioned by STAGETEXT



Please say that you are booking for a captioned performance so you qualify for any discounts that are available.

SAT 27 NOV 14:30

£25

WAR HORSE

New London Theatre, Drury Lane, London WC2B 5PW

The National Theatre's award-winning production continues its record-breaking run at the New London Theatre.

T: 020 7452 3000 **E:** boxoffice@nationaltheatre.org.uk

Captioned by STAGETEXT



TUE 30 NOV 19:30

£12-£29

THE TRAIN DRIVER

Hampstead Theatre, Eton Avenue, Swiss Cottage, London NW3 3EU

South Africa's finest playwright, Athol Fugard, finds common humanity in a beautiful and tragic encounter.

T: 020 7722 9301 **E:** access@hampsteadtheatre.com

Captioned by STAGETEXT



THU 9 DEC 19:30

£11-£16

JOSEPH K

Gate Theatre, Above The Prince Albert Pub, 11 Pembridge Road, Notting Hill, London W11 3HQ

Award-winning writer Tom Basden creates a reworking of Kafka's novel about one man's fight against an invisible law.

T: 020 7229 5387 **E:** gate@gatetheatre.co.uk

Captioned by Miranda Yates



SAT 11 DEC 14:30

£27.50

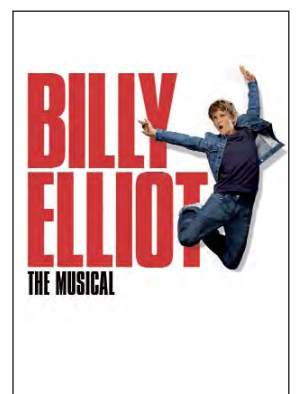
BILLY ELLIOT – THE MUSICAL

Victoria Palace Theatre, Victoria Street, London SW1E 5EA

An inspiring story of one boy's dream to realise his ambitions against the odds.

T: 020 7834 1170 **E:** access@victoriapalace.co.uk

Captioned by STAGETEXT



34 Captioned



Please say that you are booking for a captioned performance so you qualify for any discounts that are available.

THU 16 DEC 19:00

£10

ALADDIN

Watford Palace Theatre, 20 Clarendon Road, Watford, Hertfordshire WD17 1JZ

Traditional family pantomime with live music and plenty of fun for all the family.

T: 01923 225 671 **E:** sales@watfordpalacetheatre.co.uk

Captioned by STAGETEXT



FRI 17 DEC 19:30

£10-£27.50

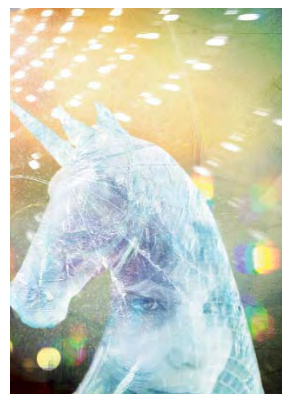
THE GLASS MENAGERIE

Young Vic Theatre, 66 The Cut, London SE1 8LZ

Tennessee Williams's deeply touching memory play and first great Broadway success takes as its subject the most fragile of all human emotions – hope.

T: 020 7922 2922 **E:** boxoffice@youngvic.org

Captioned in-house



SAT 18 DEC 16:00

(Companion ticket same price) **£10**

KIN

Royal Court Theatre, Jerwood Theatre Upstairs, Sloane Square, London SW1W 8AS

A girls' boarding school in the 1990s. Whilst Mimi learns her lines for the Christmas play, Janey desperately clings on to her best friend status.

T: 020 7565 5000 **E:** ruthhawkins@royalcourttheatre.com

Captioned by STAGETEXT



TUE 21 DEC 19:30 & WED 5 JAN 14:30

(Companion ticket same price) **£15**

THE MASTER BUILDER

Almeida Theatre, Almeida Street, London N1 1TA

Stephen Dillane and Gemma Arterton appear in this Ibsen classic.

T: 020 7359 4404 **E:** access@almeida.co.uk

Captioned in-house



Please say that you are booking for a captioned performance so you qualify for any discounts that are available.

TUE 21 DEC 19:45

£28-£40

BLACK WATCH

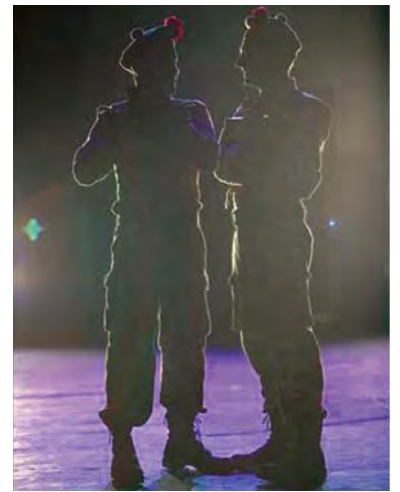
Barbican Theatre, Silk Street, London EC2Y 8DS

Returning to the Barbican following its success at the 2009 Olivier's, Black Watch forcibly throws us into the frontline soldier's experience.

T: 0845 120 7511

E: access@barbican.org.uk

Captioned by STAGETEXT



WED 22 DEC 19:00

£10-£20

RED RIDING HOOD

Theatre Royal Stratford East, Gerry Raffles Square, Stratford, London E15 1BN

Join us as innocent Red Riding Hood and her short-sighted grandmother meet the big bad wolf.

T: 020 8534 0310

E: afro@stratfordeast.com

Captioned by Suzanne Walker



TUE 28 DEC 19:00

£10-£18

BEASTS AND BEAUTIES

Hampstead Theatre, Eton Avenue, Swiss Cottage, London NW3 3EU

Eight hilarious and gruesome fairytales to make you laugh with delight and shiver with glee.

T: 020 7722 9301

E: access@hampsteadtheatre.com

Captioned by STAGETEXT



36 Sign Language Interpreted



Please say that you are booking for a signed performance so you qualify for any discounts that are available.

SAT 4 SEP 14:00

£11

ROOM ON THE BROOM

Rose Theatre, Kingston Upon Thames KT1 1HL

A spellbinding adventure from the creators of the international hit stage show *The Gruffalo*. The perfect way to end the summer holidays for everyone aged 3+.

T: 0844 412 4648 **E:** customer.relations@seetickets.com

BSL interpreted by Paula Cox – Theatresign



SAT 4 SEP 14:30

£14

LADIES DOWN UNDER

Queen's Theatre, Hornchurch RM11 1QT

Pearl, Jan, Shelley and Linda leave their jobs in a Hull fish packing factory and embark on a laughter-filled trip of a lifetime.

T: 01708 443 333 **E:** james@queens-theatre.co.uk

BSL interpreted by Shaun Hunsley



FRI 17 SEP 19:30 & SAT 18 SEP 14:30

£30

WICKED

Apollo Victoria Theatre, 17 Wilton Road, London SW1V 1LG

Discover the incredible untold story of an unlikely but profound friendship between two girls and their extraordinary adventures in Oz...

T: 020 7828 7074 **E:** apolloboxoffice@theambassadors.com

BSL interpreted by Wendy Ebsworth



THU 23 SEP 19:30

£20

JERSEY BOYS

Prince Edward Theatre, Old Compton Street, London W1D 4HS

Jersey Boys tells the story of how four blue-collar boys from the wrong side of the tracks became one of the biggest American pop bands of the 1960s.

T: 0844 482 5165 **E:** access@delmack.co.uk

BSL interpreted by Donna Ruane – Theatresign



FRI 24 SEP 19:30

£7.50-£17.50

BEDLAM

Shakespeare's Globe, 21 New Globe Walk, Bankside, London SE1 9DT

World premiere of Nell Leyshon's new play set in London's infamous hospital for the insane.

T: 0207 401 9919 **E:** sian.p@shakespearesglobe.com

BSL interpreted by Mary Connell



Please say that you are booking for a signed performance so you qualify for any discounts that are available.



THU 30 SEP 19:45

£15

THE WONDERFUL WORLD OF HUGH HUGHES: 360

The Pit, Barbican Theatre, Silk Street, London EC2Y 8DS

A climb up to Snowdon leads to big questions about fantasy, love and bottling things up.

T: 0845 120 7511 **E:** access@barbican.org.uk

BSL interpreted by Jacqui Beckford



SAT 2 OCT 14:30

£22.50-£62.50

LEGALLY BLONDE THE MUSICAL

Savoy Theatre, Strand, London WC2R 0ET

Follow the West End's brightest heroine (and her Chihuahua) to Harvard. Snaps!

T: 0871 297 5477 **E:** ticketcentre@theambassadors.com

BSL interpreted by Donna Ruane - Theatresign



FRI 8 OCT 19:45

£18.50-£30.50

THE ALL NEW ORIGINAL TRIBUTE TO THE BLUES BROTHERS

Churchill Theatre Bromley, High Street, Bromley BR1 1HA

Featuring cast members from the hit West End run, one of Europe's finest seven piece bands and the sassy Bluesettes, this show is on a mission to entertain you!

T: 0844 871 7677 **E:** bromleyaccessbookings@theambassadors.com

BSL interpreted by Donna Ruane - Theatresign



SAT 9 OCT 14:30

£14

A FUNNY THING HAPPENED ON THE WAY TO THE FORUM

Queen's Theatre, Hornchurch RM11 1QT

The bright lights of Broadway meet Ancient Rome in the fastest, funniest musical in the whole of the Empire!

T: 01708 443 333 **E:** james@queens-theatre.co.uk

BSL interpreted by Martin Roberts



THU 14 OCT 19:30

£40

LOVE NEVER DIES

Adelphi Theatre, Strand, London WC2E 7NA

Andrew Lloyd Webber's new musical continuing the stories of the principal characters from The Phantom Of The Opera.

T: 0844 412 4648 **E:** customer.relations@seetickets.com

BSL interpreted by Donna Ruane - Theatresign



38 Sign Language Interpreted



Please say that you are booking for a signed performance so you qualify for any discounts that are available.

FRI 22 OCT-SAT 13 NOV 19:30 & 6 NOV 14:00 & 19:30

£10-£20

REASONS TO BE CHEERFUL

Theatre Royal Stratford East, Gerry Raffles Square, Stratford, London E15 1BN

Stratford East and Graeae bring you a story about a man who will do anything to get tickets to see Ian Drury, but life is complicated!

T: 020 8534 0310 **E:** afrost@stratfordeast.com

BSL interpreted by TBC



FRI 22 OCT 19:30

£30

WE WILL ROCK YOU

Dominion Theatre, Tottenham Court Road, London W1P 0AG

Seen by over 10 million people worldwide, We Will Rock You is the biggest rock theatrical event of the century!

T: 0844 841 7115 **F:** 020 7927 0998

BSL interpreted by Donna Ruane – Theatresign



SAT 23 & MON 25 OCT 19:30 & THU 11 NOV 15:30 (Companion ticket same price) **£12**

TRIBES

Royal Court Theatre, Jerwood Theatre Upstairs, Sloane Square, London SW1W 8AS

Nina Raine's second play is a fascinating dissection of belonging, family and the limitations of communication.

T: 020 7565 5000 **E:** ruthhawkins@royalcourttheatre.com

BSL interpreted by TBC



TUE 26 OCT 14:00

£8-£12

MISSION TO MARS

Polka Theatre, 240 The Broadway, Wimbledon SW19 1SB

Fun, fast-paced and packed with emotion, Polka and Unlimited Theatre will take you on a journey through the solar system in the adventure of a lifetime. For ages 7-11.

T: 020 8543 4888 **E:** lucia@polkatheatre.com

BSL interpreted by Jacqui Beckford



THU 4 NOV 19:45

£6-£12

BLACK-I

Oval House Theatre, 52-54 Kennington Oval, London SE11 5SW

Banga Naz disturbs English Rose dancing on the roof of a Mayfair mansion at 3am. As dawn breaks over London, Islam, elite London and a flick-knife collide.

T: 020 7582 7680 **E:** bookings@ovalhouse.com

BSL interpreted by Jeni Draper



Please say that you are booking for a signed performance so you qualify for any discounts that are available.



SAT 6 NOV 14:30

£14

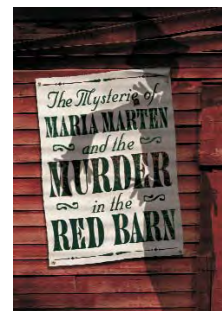
THE MYSTERIE OF MARIA MARTEN AND THE MURDER IN THE RED BARN

Queen's Theatre, Hornchurch RM11 1QT

Tongues are wagging as the drunken yokels in a small Essex village get mixed up in the biggest murder mystery of 1827...

T: 01708 443 333 **E:** james@queens-theatre.co.uk

BSL interpreted by Jeni Draper



SAT 6 NOV 14:30

£30

PRISCILLA QUEEN OF THE DESERT THE MUSICAL

Palace Theatre, Shaftesbury Avenue, London W1D 5AY

With outrageous costumes and a score of dance floor classics, Priscilla is a fun new musical.

T: 0844 412 4648 **E:** customer.relations@setickets.com

BSL interpreted by Donna Ruane – Theatresign



MON 8 NOV 19:30

£12

PASSION

Donmar Warehouse, 41 Earlham Street, London WC2H 9LX

Stephen Sondheim and James Lapine's multi-award winning musical examines the power of love.

T: 020 7845 5813 **E:** access@donmarwarehouse.com

BSL interpreted by Jacqui Beckford



WED 1 DEC- SAT 15 JAN In rep, check with theatre for times

£11-£20

BADJELLY'S BAD CHRISTMAS

Chickenshed Theatre, Chase Side, Southgate, London N14 4PE

A festive, magical, musical journey through a treasury of Spike Milligan's best loved characters.

T: 020 8292 9222 **E:** bookings@chickenshed.org.uk

BSL integrated into all performances



WED 15 DEC 10:30 & SAT 18 DEC 18:30

£9-£12

SNOW WHITE

The Broadway, Broadway, Barking, London IG11 7LS

This Christmas, don't miss Snow White, our fun-packed pantomime suitable for the whole family.

T: 020 8507 5607 **E:** boxoffice@thebroadwaybarking.com

BSL interpreted by TBC



40 Sign Language Interpreted



Please say that you are booking for a signed performance so you qualify for any discounts that are available.

FRI 17 DEC 19:00

£10-£20

RED RIDING HOOD

Theatre Royal Stratford East, Gerry Raffles Square, Stratford, London E15 1BN

Join us as innocent Red Riding Hood and her short-sighted grandmother meet the big bad wolf.

T: 020 8534 0310 **E:** afroost@stratfordeast.com

BSL interpreted by Jacqui Beckford



SAT 18 DEC 11:00 & 14:00

£6

THE SLEEPING PRINCESS

Half Moon Young People's Theatre, White Horse Road, London E1 0ND

A re-telling of the classic fairytale with beautiful puppets, featuring integrated British Sign Language throughout.

T: 020 7709 8900 **E:** tickets@halfmoon.org.uk

BSL interpreted by Krazy Kat Theatre



SAT 18 DEC 15:00

£TBC

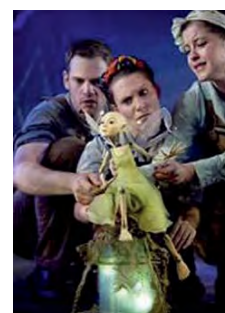
FAERIES

Linbury Studio Theatre, Royal Opera House, Covent Garden, London WC2E 9DD

A special event for young families and the young at heart, the combination of actors and puppets from Blind Summit Theatre in Faeries is truly spellbinding.

T: 020 7304 4000 **E:** boxoffice@roh.org.uk

BSL interpreted by Donna Ruane – Theatresign



SUN 19 DEC 15:00

£8-£32

THE THREE MUSKETEERS – A NEW MUSICAL

Rose Theatre, Kingston Upon Thames KT1 1HL

Hold on to your hearts for a gripping tale of courage, reckless hope and daring this Christmas.

T: 0844 412 4648 **E:** customer.relations@seetickets.com

BSL interpreted by Paula Cox – Theatresign



WED 28 DEC 14:30

£18-£29

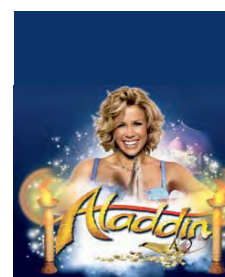
ALADDIN

Churchill Theatre Bromley, High Street, Bromley BR1 1HA

A brilliantly entertaining family pantomime with music, dancing and comedy – don't miss out on Aladdin!

T: 0870 060 6620 **E:** bromleyaccessbookings@theambassadors.com

BSL interpreted by Donna Ruane – Theatresign



AT-A-GLANCE



SEPTEMBER				
WED 1	LOVE NEVER DIES			3
FRI 3 & SAT 4	EARTHQUAKES IN LONDON			3
SAT 4	LADIES DOWN UNDER			3
	INTO THE WOODS			16
	ROOM ON THE BROOM			36
	LADIES DOWN UNDER			36
WED 8	LOVE NEVER DIES			16
THU 9	EARTHQUAKES IN LONDON			16
FRI 10 & SAT 11	WICKED			16
SAT 11	PUNK ROCK			3
THU 16	RE-ORIENTATIONS			4
	HOW TO BE AN OTHER WOMAN			17
FRI 17 & SAT 18	WICKED			36
SAT 18	THE HABIT OF ART			4
	LES MISÉRABLES			4
	MORECAMBE			4
	PUNK ROCK			17
MON 20	THE PRISONER OF SECOND AVENUE			17
TUE 21	THE HABIT OF ART			17
THU 23	RE-ORIENTATIONS			18
	BEAUTIFUL BURNOUT			18
	JERSEY BOYS			36
FRI 24	BEDLAM			36
FRI 24 & SAT 25	WICKED			5
SAT 25	BEDLAM			5
	WAR HORSE			5
	HOW TO BE AN OTHER WOMAN			5
	THE ALIENS			18
	LARK RISE TO CANDLEFORD			18
	LES MISÉRABLES			27
SAT 25 & TUE 28	THE THUNDERBOLT			5
SUN 26	BEAUTIFUL BURNOUT			6
TUE 28	CLYNBOURNE PARK			27
WED 29	SISTER ACT			6

OCTOBER

THU 30	THE WONDERFUL WORLD OF HUGH HUGHES: 360		37
SAT 2	THE ALIENS		6
	LEGALLY BLONDE THE MUSICAL		37
THU 7	DESIGN FOR LIVING		27
FRI 8	THE ALL NEW ORIGINAL TRIBUTE TO THE BLUES BROTHERS		37
SAT 9	A FUNNY THING HAPPENED ON THE WAY TO THE FORUM		6
	PRISCILLA QUEEN OF THE DESERT THE MUSICAL		6
	WANDERLUST		7
	THE BIG FELLAH		27
	A FUNNY THING HAPPENED ON THE WAY TO THE FORUM		37
MON 11	DESIGN FOR LIVING		7
	BLOOD BROTHERS		7
	BLOOD BROTHERS		28
TUE 12	DISNEY'S THE LION KING		7
	PRISCILLA QUEEN OF THE DESERT THE MUSICAL		28
WED 13	DIRTY DANCING – THE CLASSIC STORY ON STAGE		28
THU 14	LOVE NEVER DIES		37
SAT 16	THE BIG FELLAH		7
	HOUSE OF GAMES		28
SAT 16 & TUE 19	THE COMPANY MAN		8
SAT 16, TUE 19, WED 20 & FRI 29	TRIBES		29
TUE 19	OR YOU COULD KISS ME		29
WED 20	ENLIGHTENMENT		29
	HAY FEVER		29
THU 21	FAUST		30
FRI 22 & SAT 23	HAMLET		8
FRI 22 OCT- SAT 13 NOV	REASONS TO BE CHEERFUL		8
	REASONS TO BE CHEERFUL		30
	REASONS TO BE CHEERFUL		38
FRI 22	WE WILL ROCK YOU		38
SAT 23	HAY FEVER		8

	ENLIGHTENMENT		9
SAT 23 & MON 25	TRIBES		38
SUN 24	THE GARBAGE KING		9
TUE 26	IVAN AND THE DOGS		9
	PASSION		30
	MISSION TO MARS		38
WED 27	FAUST		9
	HAMLET		30
THU 28	IVAN AND THE DOGS		31
FRI 29	THE FIREWORK MAKER'S DAUGHTER		10
SAT 30	BLOOD AND GIFTS		10
	HOUSE OF GAMES		10
NOVEMBER			
MON 1	BLOOD AND GIFTS		10
MON 1, WED 3 & SAT 13	TRIBES		29
TUE 2	HOUSE OF GAMES		28
THU 4	BLACK-I		38
FRI 5	BLACK-I		10
SAT 6	REASONS TO BE CHEERFUL		8
	MY ROMANTIC HISTORY		10
	THE MYSTERIE OF MARIA MARTEN AND THE MURDER IN THE RED BARD		11
	SPEND, SPEND, SPEND!		11
	TRIBES		11
	REASONS TO BE CHEERFUL		30
	REASONS TO BE CHEERFUL		38
	THE MYSTERIE OF MARIA MARTEN AND THE MURDER IN THE RED BARD		39
	PRISCILLA QUEEN OF THE DESERT THE MUSICAL		39
MON 8	PASSION		39
TUE 9	RED BUD		31
WED 10	MAMMA MIA!		11
THU 11	TRIBES		38
FRI 12	MAMMA MIA!		31
SAT 13	PASSION		12
	LES MISÉRABLES		31
	MY ROMANTIC HISTORY		32
THU 18	MACBETH		12

	THE THREE MUSKETEERS AND THE PRINCESS OF SPAIN		32
SAT 20	BLASTED		12
	BLASTED		32
SAT 20 & TUE 23	HUNGRY GHOSTS		12
THU 25	DISNEY'S THE LION KING		32
SAT 27	THE TRAIN DRIVER		13
	WAR HORSE		33
TUE 30	THE TRAIN DRIVER		33
DECEMBER			
WED 1 DEC- SAT 15 JAN	BADJELLY'S BAD CHRISTMAS		39
THU 9	JOSEPH K		33
SAT 11	BLACK WATCH		13
	BILLY ELLIOT – THE MUSICAL		33
TUE 14	BEA		13
WED 15	SNOW WHITE		39
THU 16	ALADDIN		34
FRI 17	THE GLASS MENAGERIE		34
	RED RIDING HOOD		40
SAT 18	ALADDIN		13
	JOSEPH K		14
	KIN		34
	THE MASTER BUILDER		14
	SNOW WHITE		39
	THE SLEEPING BEAUTY		40
	FAERIES		40
SUN 19	THE THREE MUSKETEERS – A NEW MUSICAL		40
MON 20	BADJELLY'S BAD CHRISTMAS		14
TUE 21	ONCE BITTEN		14
	BLACK WATCH		35
TUE 21 DEC & SAT 5 JAN	THE MASTER BUILDER		34
WED 22	THE GLASS MENAGERIE		15
	RED RIDING HOOD		35
THU 23	RED RIDING HOOD		15
TUE 28	BEASTS AND BEAUTIES		35
	ALADDIN		40
THU 30	BEASTS AND BEAUTIES		15
	THE THREE MUSKETEERS – A NEW MUSICAL		15



Show your appreciation

Treat someone to a night of entertainment with Theatre Tokens. Perfect for birthdays, anniversaries and other special occasions, these unique theatre gift vouchers can be exchanged for tickets at over 235 venues nationwide, including all of London's West End. They're available in values of £5, £10, £20 and £50, and have no expiry date – so there's no time limit on using them.

Available from selected branches of WHSmith, Waterstone's, Borders and Books etc, Tokenline and our website.



The magical gift of theatre

Tokenline **0870 164 8800**
www.theatretokens.com

Further Information

Official London Theatre Guide

www.officiallondontheatre.co.uk

For all the latest theatre news, show listings, assisted performances, venue information, first night features and interviews.

Shape Tickets

www.shapearts.org.uk/shapetickets

T: 020 7424 7333 / **Minicom:** 020 7424 7330

Accessible shows, seats, discounts and a volunteer to drive and enjoy the show with you.

SPIT

www.spit.org.uk / T: 01925 754 231 / **Minicom:** 01925 757 115

Promoting availability and awareness of British Sign Language (BSL) interpreted theatre.

STAGETEXT

www.stagetext.org / T: 020 7377 0540 / **Minicom:** 020 7247 7801

F: 020 7247 5622 / **E:** enquiries@stagetext.org

Delivering captioned performances and promoting usage in UK venues.

THEATRESIGN

www.theatresign.com / T: 18002 020 8654 2505 / **Minicom:** 020 8654 2505

F: 020 8654 9282 / **E:** enquiry@theatresign.com

Delivering British Sign Language interpretation for West End theatre.

Tourism for All UK

www.tourismforall.org.uk / T: 0845 124 9974 / **E:** info@tourismforall.org.uk

For information on accessible accommodation, tourism advice and special offers on hotels.

Transport for London (TfL)

www.tfl.gov.uk / T: 020 7222 1234 / **Minicom:** 020 7918 3015

E: travelinfo@tfl.gov.uk

For detailed advice on accessible stations and transport in London.

Visit London

www.visitlondon.com

The official website for visiting London.

VocalEyes

www.vocaleyeyes.co.uk / T: 020 7375 1043 / **E:** enquiries@vocaleyeyes.co.uk

Delivering audio description for blind and partially sighted people.
