

Eros, Piccadilly Circus to the Prince Edward Theatre

Eros Statue, Piccadilly Circus W1B 5RD

Prince Edward Theatre, Old Compton Street W1D 4HS



General journey information

Length: 490 metres (about 1610 feet)

Time: 12-15 minutes (20-30 minutes if you have mobility difficulties or if the area is crowded)

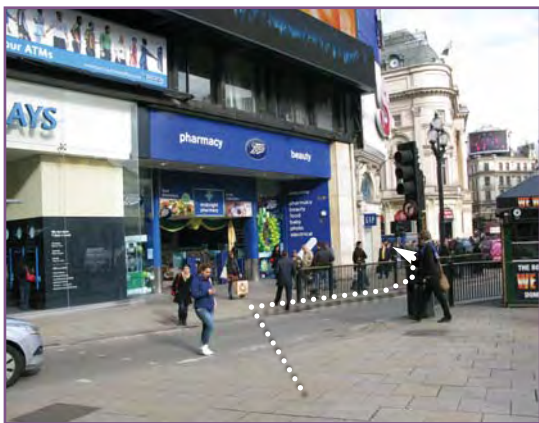


Each picture includes a coloured time-bar to show you the distance completed so far



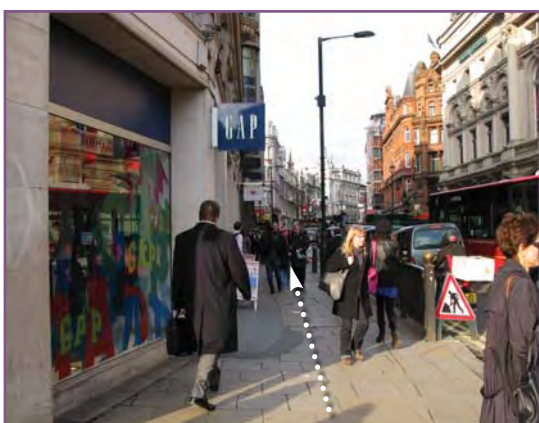
1 of 9

With your back to Eros and the Lillywhites building, look over to the neon signs of Piccadilly Circus. Cross Piccadilly Street to the large traffic island, turn right and cross Regent Street to the ticket kiosk.



2 of 9

Cross over Glasshouse Street so you are under the neon signs. Turn right and go left around the corner into Shaftesbury Avenue.



3 of 9

Look down Shaftesbury Avenue and head towards bus stop H.



4 of 9

Pass bus stop H and the columns on your left and continue for 20 metres (about 65 feet) to the corner.



5 of 9

Cross Denman Street and go around the pub on the corner to your left.



6 of 9

Cross Great Windmill Street and go around the corner to your left into Shaftesbury Avenue.



7 of 9

Keep going along Shaftesbury Avenue, passing the Lyric and Apollo Theatres on your left. Cross Rupert Street and pass the Gielgud and Queen's theatres. Continue for several more blocks, crossing Wardour Street, Dean Street, Frith Street and the Curzon Cinema.





8 of 9

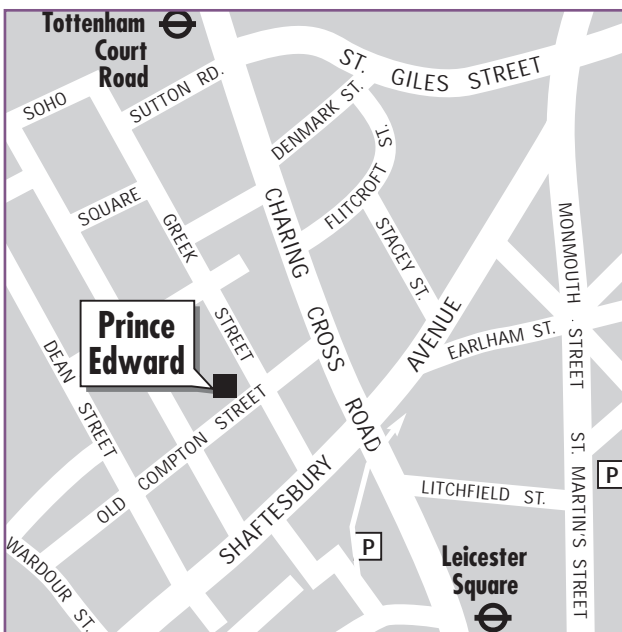
At the next corner, turn left into Greek Street and continue for another 65 metres (about 213 feet), crossing Romilly Street on the way.



9 of 9

When you reach the corner of Old Compton Street, cross over and into the entrance of the Prince Edward Theatre. Ask here for assistance to the accessible entrance (around the corner to the right of the main entrance).

You have now reached the Prince Edward Theatre.



Prince Edward Theatre

Old Compton Street, London W1D 4HS

Tickets online:

www.officiallondontheatre.co.uk/buy



Theatre access information

Web: www.officiallondontheatre.co.uk

Email: access@solttma.co.uk



London travel information

Web: www.tfl.gov.uk/journeyplanner

Email: travinfo@tfl.gov.uk

Telephone: +44 (0)20 7222 1231