

Eros, Piccadilly Circus to the Queen's Theatre

Eros Statue, Piccadilly Circus W1B 5RD

Queen's Theatre, Shaftesbury Avenue W1D 6BA



General journey information

Length: 290 metres (about 950 feet)

Time: 6 minutes (8-10 minutes if you have mobility difficulties or if the area is crowded)

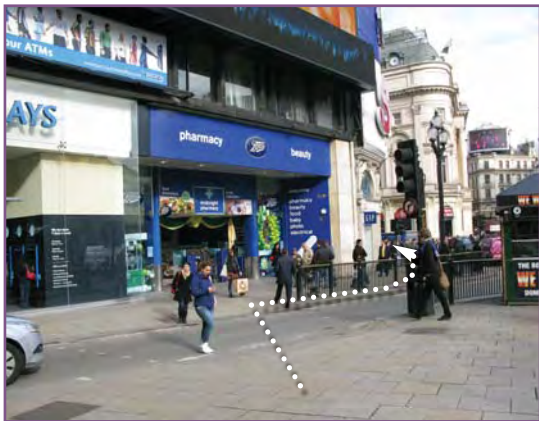


Each picture includes a coloured time-bar to show you the distance completed so far



1 of 9

With your back to Eros and the Lillywhites building, look over to the neon signs of Piccadilly Circus. Cross Piccadilly Street to the large traffic island, turn right and cross Regent Street to the ticket kiosk.



2 of 9

Cross over Glasshouse Street so you are under the neon signs. Turn right and go left around the corner into Shaftesbury Avenue.



3 of 9

Look down Shaftesbury Avenue and head towards bus stop H.



4 of 9

Pass bus stop H and the columns on your left and continue for 20 metres (about 65 feet) to the corner.



5 of 9

Cross Denman Street and go around the pub on the corner to your left.



6 of 9

Cross Great Windmill Street and go around the corner to your left into Shaftesbury Avenue.



7 of 9

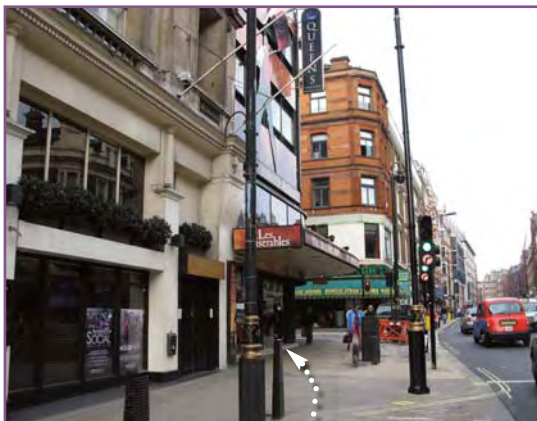
Keep going along Shaftesbury Avenue. Pass the Lyric and Apollo Theatres on your left and continue to the corner.





8 of 9

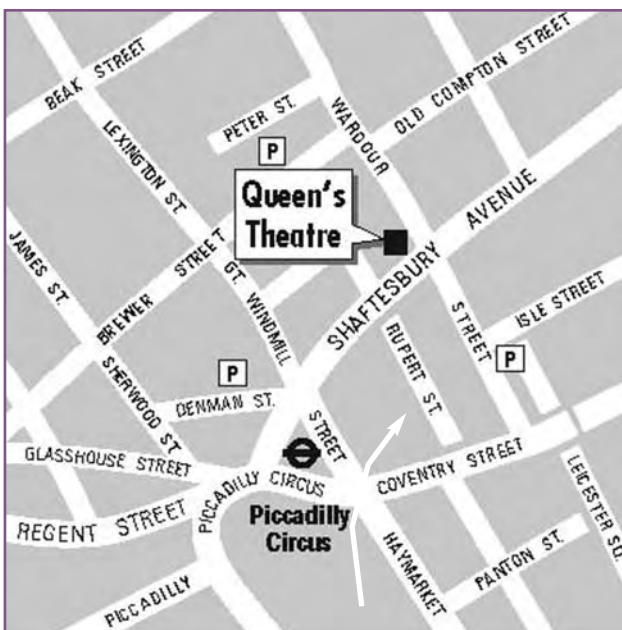
Cross Rupert Street and pass the Gielgud Theatre on your left. Continue along Shaftesbury Avenue.



9 of 9

The entrance to the Queen's Theatre is on the corner. Ask here for assistance to the accessible entrance.

You have now reached the Queen's Theatre.



Queen's Theatre

Shaftesbury Avenue, London W1D 6BA

Tickets online:

www.officiallondontheatre.co.uk/buy



Theatre access information

Web: www.officiallondontheatre.co.uk

Email: access@solttma.co.uk



London travel information

Web: www.tfl.gov.uk/journeyplanner

Email: travinfo@tfl.gov.uk

Telephone: +44 (0)20 7222 1231